

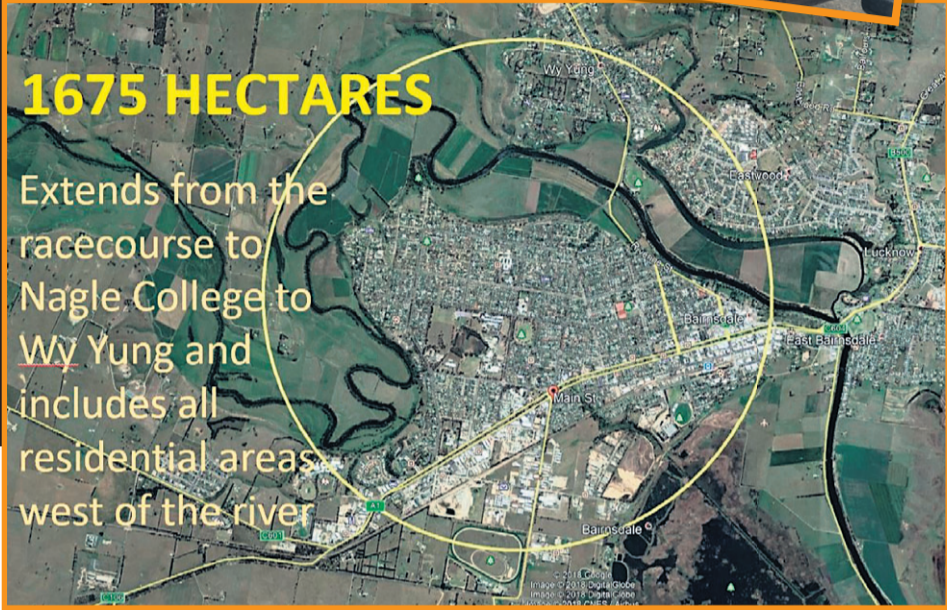
#StopKalbar

And the proposed Fingerboards Mineral Sands Mine



DID YOU KNOW...

- Kalbar Resources is nearing completion of an Environment Effects Statement (EES) to gain approval for a 1675 ha mineral sands mine at the Fingerboards, about 20km north-west of Bairnsdale.
- Kalbar has NO experience operating any mine.
- The proposed mine will be 45m deep, much deeper than other mineral sands and rare earths mines in Australia.
- It will operate 24/7 with 80 B-double trucks transporting hazardous materials on our local roads.
- There are over 60 residences within 2km of the mine's boundary.
- **This is a highly inappropriate and dangerous location for a mine where people live, work, farm, where food is grown, where our water is stored and where children go to school.**

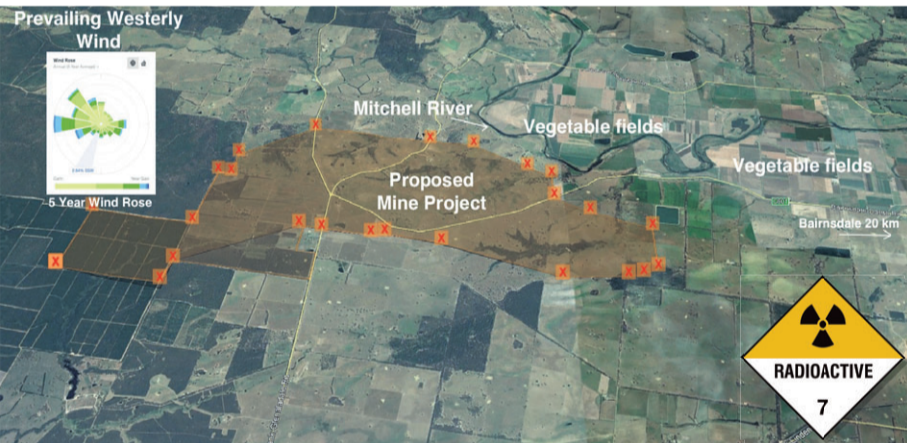


1675 HECTARES
Extends from the racecourse to Nagle College to Wy Yung and includes all residential areas west of the river

Size comparison, in hectares, of Kalbar's proposed mine, overlaid on a map of Bairnsdale.

RADIOACTIVE AND HIGHLY TOXIC SUBSTANCES

- The substances to be mined are expected to contain highly toxic carcinogenic heavy metals such as Arsenic, Beryllium, Ceric Oxide, Cobalt, Chromium, Holmium, Monazite, Thorium, Titanium, Uranium and Vanadium.
- Airborne silica in the dust if inhaled causes cancer and lung diseases.



CONTAMINATION RISKS

- Kalbar says it can't control all the dust generated by the mine.
- The vegetable growing industry in the Mitchell River valley worth \$150M/year that employs up to 2,000 people is 500m downwind.
- The Mitchell River, the source of water to irrigate and make ice to transport those crops is 350m downwind.
- Our drinking water at the Woodglen Reservoir is 3.5km downwind.
- A 90 ha tailings dam containing chemicals/fine tailings is on the Perry River catchment that flows into the Gippsland Lakes. There are major concerns about toxic substances entering the waterways from leaching and flooding.

HUGE DEMANDS ON WATER

- The mine will require at least 3,000,000,000 litres (3GL) of water annually for over 15 years.
- Most of this water is to come from winter-fill licences from the Mitchell River, licences that will be auctioned to the highest bidder if demand exceeds supply.

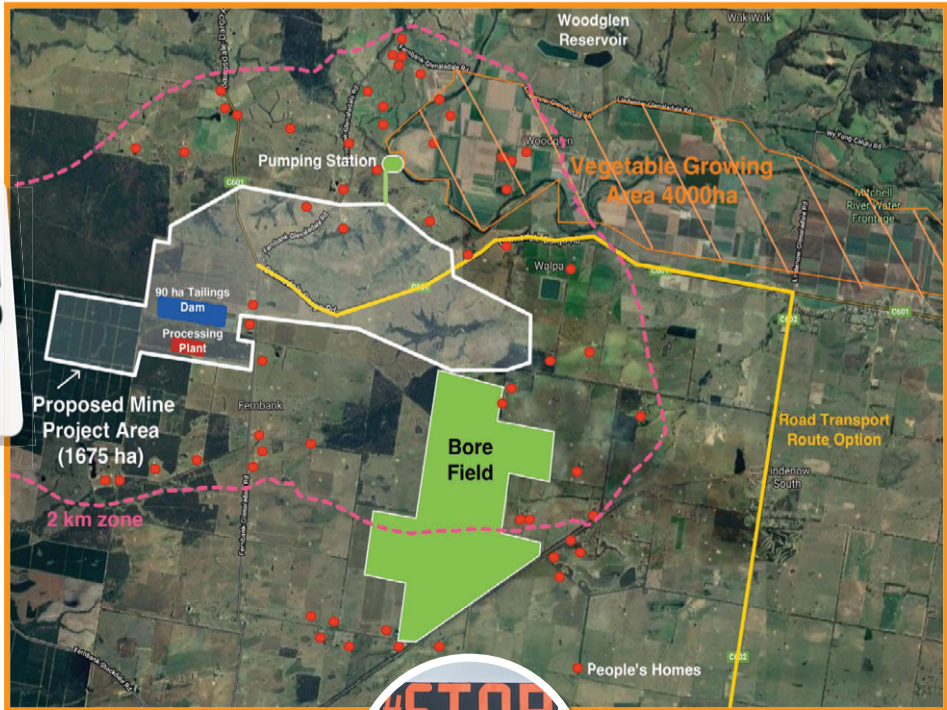


JOBS AND TOURISM

- Thousands of direct and indirect jobs in agriculture, horticulture and tourism will be threatened.
- *If the 3GL of water Kalbar requires was redirected to growing vegetables in the Mitchell River valley, 600 jobs could be created, that's 3 times more than Kalbar's proposed 197 jobs.*



View taken from the vegetable fields of the Mitchell River valley, across the Mitchell River to where the mine project area is proposed to be located on top of the plateau marked in red.



CONTACT US AT:
EMAIL: minefreeglenaladale@gmail.com
PHONE: 0467 629 485
FACEBOOK: <https://www.facebook.com/minefreeglenaladale>
FIGHTING FUND DONATIONS: <https://www.gofundme.com/f/7xvkd3w>
WEBSITE: www.minefreeglenaladale.org

