

← all Intensive Vegetables →

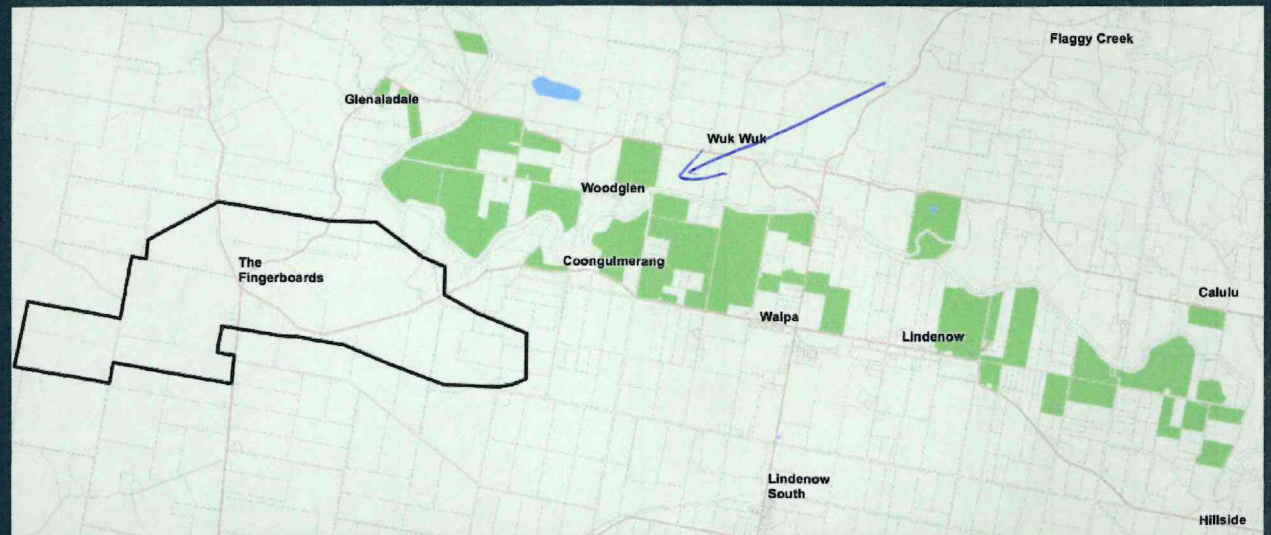
Figure 2.2: Land uses in project locality

Data use, ground truthing of (production) data

The Hort Impact Assessment (HIA) and my responses are based on published information, including but not limited to data by

- the Australian Bureau of Statistics (ABS),
- Agriculture Victoria,
- The Environmental Systems Research Institute's (ESRI) Land Use Information (2016),
- REMPLAN regional data.

The EES socioeconomic report has been used as a reference.



A strategic report by KPMG (2019) for Food and Fibre Gippsland comments on poor data availability for horticulture on the farm and regional level. *KPMG 2019. "Accelerating growth for the Gippsland food and fibre industry".*

Dust impacts on vegetable production

RMCG relied on the EES technical report by by Katestone Environmental. I refer to mitigation procedures in the relevant EES report and additional mitigation recommend in the HIA report:

- *Cease certain activities when real time monitoring and or weather forecasts alert to risks*
- *Work with landholders to develop further mitigation as required.*

Rain, overhead irrigation and post harvest washing and sanitation can remove dust from all sources.

In addition to the HIA report, my statement emphasises:

Windbreaks (natural and manufactured) around the Project site are a key mitigation measure.



Image Source; Weekly Times, February 15, 2019

<https://www.mining-technology.com/products/wind-fence-types/>

Continued on next slide