

This report provides information to support an application to remove, destroy or lop native vegetation in accordance with the *Guidelines for the removal, destruction or lopping of native vegetation*. The report is **not an assessment by DELWP** of the proposed native vegetation removal. Native vegetation information and offset requirements have been determined using spatial data provided by the applicant or their consultant.

Date of issue: 29/07/2021

Report ID: EHP_2021_096

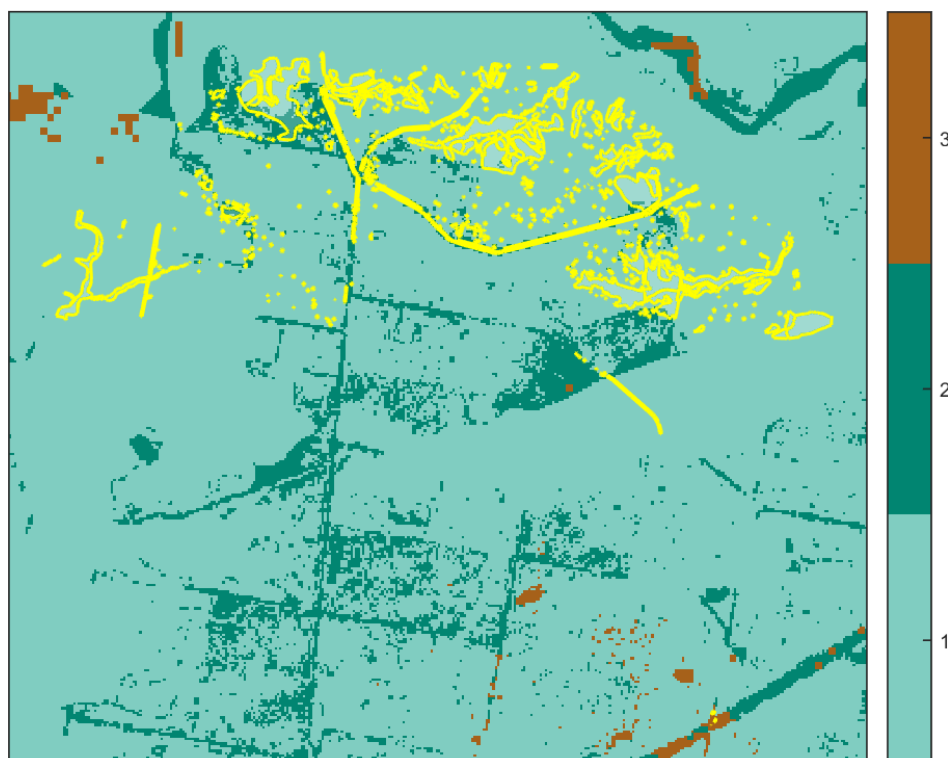
Time of issue: 3:08 pm

Project ID	EHP7308_Glenaladale_VG94_S1_CP_28072021
------------	-----------------------------------------

Assessment pathway

Assessment pathway	Detailed Assessment Pathway
Extent including past and proposed	249.948 ha
Extent of past removal	0.000 ha
Extent of proposed removal	249.948 ha
No. Large trees proposed to be removed	837
Location category of proposed removal	Location 3 The native vegetation is in an area where the removal of less than 0.5 hectares could have a significant impact on habitat for one or more rare or threatened species. The native vegetation is also in an area mapped as an endangered Ecological Vegetation Class (as per the statewide EVC map).

1. Location map



Total offset requirements if a permit is granted

Any approval granted will include a condition to obtain an offset that meets the following requirements:

General offset amount¹	1.016 general habitat units
Vicinity	East Gippsland, West Gippsland Catchment Management Authority (CMA) or East Gippsland Shire Council
Minimum strategic biodiversity value score ²	0.255
Large trees*	47 large trees
Species offset amount³	<p>34.264 species units of habitat for Australian Grayling, <i>Prototroctes maraena</i></p> <p>63.411 species units of habitat for Flinders Pygmy Perch, <i>Nannoperca sp. 1</i></p> <p>136.537 species units of habitat for Sticky Wattle, <i>Acacia howittii</i></p> <p>38.540 species units of habitat for Yellow-wood, <i>Acronychia oblongifolia</i></p> <p>46.084 species units of habitat for Thick-lip Spider-orchid, <i>Caladenia tessellata</i></p> <p>139.674 species units of habitat for Purple Diuris, <i>Diuris punctata</i></p> <p>144.335 species units of habitat for Bushy Hedgehog-grass, <i>Echinopogon caespitosus var. caespitosus</i></p> <p>140.249 species units of habitat for Rough-grain Love-grass, <i>Eragrostis trachycarpa</i></p> <p>111.068 species units of habitat for Slender Violet-bush, <i>Hybanthus monopetalus</i></p> <p>144.335 species units of habitat for Slender Wire-lily, <i>Laxmannia gracilis</i></p> <p>144.335 species units of habitat for Golden Pomaderris, <i>Pomaderris aurea</i></p> <p>28.412 species units of habitat for Star Cucumber, <i>Sicyos australis</i></p> <p>140.057 species units of habitat for One-flower Early Nancy, <i>Wurmbea uniflora</i></p> <p>130.087 species units of habitat for Limestone Blue Wattle, <i>Acacia caerulescens</i></p> <p>98.648 species units of habitat for Thin-leaf Daisy-bush, <i>Olearia curticola</i></p> <p>137.980 species units of habitat for Forest Red-box, <i>Eucalyptus polyanthemos subsp. longior</i></p> <p>0.057 species units of habitat for Gaping Leek-orchid, <i>Prasophyllum correctum</i></p> <p>140.249 species units of habitat for Silky Kidney-weed, <i>Dichondra sp. 1</i></p> <p>40.829 species units of habitat for Heath Spider-orchid, <i>Caladenia peisleyi</i></p>
Large trees*	790 trees
* The total number of large trees that the offset must protect	837 large trees to be protected in either the general, species or combination across all habitat units protected

NB: values within tables in this document may not add to the totals shown above due to rounding

Appendix 1 includes information about the native vegetation to be removed

Appendix 2 includes information about the rare or threatened species mapped at the site.

Appendix 3 includes maps showing native vegetation to be removed and extracts of relevant species habitat importance maps

¹ The general offset amount required is the sum of all general habitat units in Appendix 1.

² Minimum strategic biodiversity score is 80 per cent of the weighted average score across habitat zones where a general offset is required

³ The species offset amount(s) required is the sum of all species habitat units in Appendix 1.

Offset requirements if a permit is granted: Infra-1

Any approval granted will include a condition to obtain an offset that meets the following requirements:

General offset amount	0.007 general habitat units
Vicinity	East Gippsland, West Gippsland Catchment Management Authority (CMA) or East Gippsland Shire Council
Minimum strategic biodiversity value score	0.576
Species offset amount	<p>1.118 species units of habitat for Thick-lip Spider-orchid, <i>Caladenia tessellata</i></p> <p>1.177 species units of habitat for Purple Diuris, <i>Diuris punctata</i></p> <p>1.200 species units of habitat for Bushy Hedgehog-grass, <i>Echinopogon caespitosus var. caespitosus</i></p> <p>1.177 species units of habitat for Rough-grain Love-grass, <i>Eragrostis trachycarpa</i></p> <p>1.200 species units of habitat for Slender Violet-bush, <i>Hybanthus monopetalus</i></p> <p>1.200 species units of habitat for Slender Wire-lily, <i>Laxmannia gracilis</i></p> <p>1.200 species units of habitat for Golden Pomaderris, <i>Pomaderris aurea</i></p> <p>1.177 species units of habitat for One-flower Early Nancy, <i>Wurmbea uniflora</i></p> <p>1.176 species units of habitat for Forest Red-box, <i>Eucalyptus polyanthemos subsp. longior</i></p> <p>0.044 species units of habitat for Gaping Leek-orchid, <i>Prasophyllum correctum</i></p> <p>1.177 species units of habitat for Silky Kidney-weed, <i>Dichondra sp. 1</i></p>
Large trees*	11 trees
* The total number of large trees that the offset must protect	11 large trees to be protected in either the general, species or combination across all habitat units protected

Offset requirements if a permit is granted: PA-1

Any approval granted will include a condition to obtain an offset that meets the following requirements:

General offset amount	0.430 general habitat units
Vicinity	East Gippsland, West Gippsland Catchment Management Authority (CMA) or East Gippsland Shire Council
Minimum strategic biodiversity value score	0.255
Species offset amount	<p>20.614 species units of habitat for Australian Grayling, <i>Prototroctes maraena</i></p> <p>22.940 species units of habitat for Flinders Pygmy Perch, <i>Nannoperca sp. 1</i></p> <p>66.699 species units of habitat for Sticky Wattle, <i>Acacia howittii</i></p> <p>0.823 species units of habitat for Yellow-wood, <i>Acronychia oblongifolia</i></p> <p>0.924 species units of habitat for Thick-lip Spider-orchid, <i>Caladenia tessellata</i></p> <p>67.957 species units of habitat for Purple Diuris, <i>Diuris punctata</i></p> <p>68.313 species units of habitat for Bushy Hedgehog-grass, <i>Echinopogon caespitosus var. caespitosus</i></p> <p>67.966 species units of habitat for Rough-grain Love-grass, <i>Eragrostis trachycarpa</i></p> <p>48.669 species units of habitat for Slender Violet-bush, <i>Hybanthus monopetalus</i></p> <p>68.313 species units of habitat for Slender Wire-lily, <i>Laxmannia gracilis</i></p> <p>68.313 species units of habitat for Golden Pomaderris, <i>Pomaderris aurea</i></p> <p>67.971 species units of habitat for One-flower Early Nancy, <i>Wurmbea uniflora</i></p> <p>63.900 species units of habitat for Limestone Blue Wattle, <i>Acacia caerulescens</i></p> <p>43.715 species units of habitat for Thin-leaf Daisy-bush, <i>Olearia curticoma</i></p> <p>66.792 species units of habitat for Forest Red-box, <i>Eucalyptus polyanthemus subsp. longior</i></p> <p>0.013 species units of habitat for Gaping Leek-orchid, <i>Prasophyllum correctum</i></p> <p>67.966 species units of habitat for Silky Kidney-weed, <i>Dichondra sp. 1</i></p> <p>0.617 species units of habitat for Heath Spider-orchid, <i>Caladenia peisleyi</i></p>
Large trees*	349 trees
* The total number of large trees that the offset must protect	349 large trees to be protected in either the general, species or combination across all habitat units protected

Offset requirements if a permit is granted: PA-12

Any approval granted will include a condition to obtain an offset that meets the following requirements:

General offset amount	0.271 general habitat units
Vicinity	East Gippsland, West Gippsland Catchment Management Authority (CMA) or East Gippsland Shire Council
Minimum strategic biodiversity value score	0.282
Species offset amount	<p>8.481 species units of habitat for Flinders Pygmy Perch, <i>Nannoperca sp. 1</i></p> <p>12.938 species units of habitat for Sticky Wattle, <i>Acacia howittii</i></p> <p>9.854 species units of habitat for Yellow-wood, <i>Acronychia oblongifolia</i></p> <p>12.259 species units of habitat for Thick-lip Spider-orchid, <i>Caladenia tessellata</i></p> <p>12.938 species units of habitat for Purple Diuris, <i>Diuris punctata</i></p> <p>14.081 species units of habitat for Bushy Hedgehog-grass, <i>Echinopogon caespitosus var. caespitosus</i></p> <p>12.938 species units of habitat for Rough-grain Love-grass, <i>Eragrostis trachycarpa</i></p> <p>13.958 species units of habitat for Slender Violet-bush, <i>Hybanthus monopetalus</i></p> <p>14.081 species units of habitat for Slender Wire-lily, <i>Laxmannia gracilis</i></p> <p>14.081 species units of habitat for Golden Pomaderris, <i>Pomaderris aurea</i></p> <p>9.748 species units of habitat for Star Cucumber, <i>Sicyos australis</i></p> <p>12.938 species units of habitat for One-flower Early Nancy, <i>Wurmbea uniflora</i></p> <p>12.264 species units of habitat for Limestone Blue Wattle, <i>Acacia caerulescens</i></p> <p>12.941 species units of habitat for Thin-leaf Daisy-bush, <i>Olearia curticoma</i></p> <p>12.912 species units of habitat for Forest Red-box, <i>Eucalyptus polyanthemus subsp. longior</i></p> <p>12.938 species units of habitat for Silky Kidney-weed, <i>Dichondra sp. 1</i></p> <p>11.212 species units of habitat for Heath Spider-orchid, <i>Caladenia peisleyi</i></p>
Large trees*	133 trees
* The total number of large trees that the offset must protect	133 large trees to be protected in either the general, species or combination across all habitat units protected

Offset requirements if a permit is granted: PA-15

Any approval granted will include a condition to obtain an offset that meets the following requirements:

General offset amount	0.049 general habitat units
Vicinity	East Gippsland, West Gippsland Catchment Management Authority (CMA) or East Gippsland Shire Council
Minimum strategic biodiversity value score	0.126
Species offset amount	<p>5.550 species units of habitat for Flinders Pygmy Perch, <i>Nannoperca sp. 1</i></p> <p>4.323 species units of habitat for Sticky Wattle, <i>Acacia howittii</i></p> <p>1.452 species units of habitat for Yellow-wood, <i>Acronychia oblongifolia</i></p> <p>3.805 species units of habitat for Thick-lip Spider-orchid, <i>Caladenia tessellata</i></p> <p>4.323 species units of habitat for Purple Diuris, <i>Diuris punctata</i></p> <p>6.844 species units of habitat for Bushy Hedgehog-grass, <i>Echinopogon caespitosus var. caespitosus</i></p> <p>4.323 species units of habitat for Rough-grain Love-grass, <i>Eragrostis trachycarpa</i></p> <p>6.850 species units of habitat for Slender Violet-bush, <i>Hybanthus monopetalus</i></p> <p>6.844 species units of habitat for Slender Wire-lily, <i>Laxmannia gracilis</i></p> <p>6.844 species units of habitat for Golden Pomaderris, <i>Pomaderris aurea</i></p> <p>1.452 species units of habitat for Star Cucumber, <i>Sicyos australis</i></p> <p>4.323 species units of habitat for One-flower Early Nancy, <i>Wurmbea uniflora</i></p> <p>3.420 species units of habitat for Limestone Blue Wattle, <i>Acacia caerulescens</i></p> <p>4.289 species units of habitat for Thin-leaf Daisy-bush, <i>Olearia curticoma</i></p> <p>4.323 species units of habitat for Forest Red-box, <i>Eucalyptus polyanthemos subsp. longior</i></p> <p>4.323 species units of habitat for Silky Kidney-weed, <i>Dichondra sp. 1</i></p> <p>2.300 species units of habitat for Heath Spider-orchid, <i>Caladenia peisleyi</i></p>
Large trees*	33 trees
* The total number of large trees that the offset must protect	33 large trees to be protected in either the general, species or combination across all habitat units protected

Offset requirements if a permit is granted: PA-5

Any approval granted will include a condition to obtain an offset that meets the following requirements:

General offset amount	0.218 general habitat units
Vicinity	East Gippsland, West Gippsland Catchment Management Authority (CMA) or East Gippsland Shire Council
Minimum strategic biodiversity value score	0.240
Species offset amount	<p>6.488 species units of habitat for Australian Grayling, <i>Prototroctes maraena</i></p> <p>6.488 species units of habitat for Flinders Pygmy Perch, <i>Nannoperca sp. 1</i></p> <p>23.121 species units of habitat for Sticky Wattle, <i>Acacia howittii</i></p> <p>0.020 species units of habitat for Yellow-wood, <i>Acronychia oblongifolia</i></p> <p>0.028 species units of habitat for Thick-lip Spider-orchid, <i>Caladenia tessellata</i></p> <p>24.389 species units of habitat for Purple Diuris, <i>Diuris punctata</i></p> <p>24.441 species units of habitat for Bushy Hedgehog-grass, <i>Echinopogon caespitosus var. caespitosus</i></p> <p>24.389 species units of habitat for Rough-grain Love-grass, <i>Eragrostis trachycarpa</i></p> <p>11.430 species units of habitat for Slender Violet-bush, <i>Hybanthus monopetalus</i></p> <p>24.441 species units of habitat for Slender Wire-lily, <i>Laxmannia gracilis</i></p> <p>24.441 species units of habitat for Golden Pomaderris, <i>Pomaderris aurea</i></p> <p>24.192 species units of habitat for One-flower Early Nancy, <i>Wurmbea uniflora</i></p> <p>21.788 species units of habitat for Limestone Blue Wattle, <i>Acacia caerulescens</i></p> <p>8.902 species units of habitat for Thin-leaf Daisy-bush, <i>Olearia curticoma</i></p> <p>23.703 species units of habitat for Forest Red-box, <i>Eucalyptus polyanthemus subsp. longior</i></p> <p>24.389 species units of habitat for Silky Kidney-weed, <i>Dichondra sp. 1</i></p>
Large trees*	162 trees
* The total number of large trees that the offset must protect	162 large trees to be protected in either the general, species or combination across all habitat units protected

Offset requirements if a permit is granted: PA-8

Any approval granted will include a condition to obtain an offset that meets the following requirements:

General offset amount	0.041 general habitat units
Vicinity	East Gippsland, West Gippsland Catchment Management Authority (CMA) or East Gippsland Shire Council
Minimum strategic biodiversity value score	0.334
Species offset amount	<p>7.162 species units of habitat for Australian Grayling, <i>Prototroctes maraena</i></p> <p>19.952 species units of habitat for Flinders Pygmy Perch, <i>Nannoperca sp. 1</i></p> <p>29.456 species units of habitat for Sticky Wattle, <i>Acacia howittii</i></p> <p>26.391 species units of habitat for Yellow-wood, <i>Acronychia oblongifolia</i></p> <p>27.948 species units of habitat for Thick-lip Spider-orchid, <i>Caladenia tessellata</i></p> <p>28.890 species units of habitat for Purple Diuris, <i>Diuris punctata</i></p> <p>29.456 species units of habitat for Bushy Hedgehog-grass, <i>Echinopogon caespitosus var. caespitosus</i></p> <p>29.456 species units of habitat for Rough-grain Love-grass, <i>Eragrostis trachycarpa</i></p> <p>28.961 species units of habitat for Slender Violet-bush, <i>Hybanthus monopetalus</i></p> <p>29.456 species units of habitat for Slender Wire-lily, <i>Laxmannia gracilis</i></p> <p>29.456 species units of habitat for Golden Pomaderris, <i>Pomaderris aurea</i></p> <p>17.212 species units of habitat for Star Cucumber, <i>Sicyos australis</i></p> <p>29.456 species units of habitat for One-flower Early Nancy, <i>Wurmbea uniflora</i></p> <p>28.715 species units of habitat for Limestone Blue Wattle, <i>Acacia caerulescens</i></p> <p>28.801 species units of habitat for Thin-leaf Daisy-bush, <i>Olearia curticoma</i></p> <p>29.074 species units of habitat for Forest Red-box, <i>Eucalyptus polyanthemus subsp. longior</i></p> <p>29.456 species units of habitat for Silky Kidney-weed, <i>Dichondra sp. 1</i></p> <p>26.700 species units of habitat for Heath Spider-orchid, <i>Caladenia peisleyi</i></p>
Large trees*	149 trees
* The total number of large trees that the offset must protect	149 large trees to be protected in either the general, species or combination across all habitat units protected

Next steps

Any proposal to remove native vegetation must meet the application requirements of the Detailed Assessment Pathway and it will be assessed under the Detailed Assessment Pathway.

If you wish to remove the mapped native vegetation you are required to apply for a permit from your local council. Council will refer your application to DELWP for assessment, as required. **This report is not a referral assessment by DELWP.**

This *Native vegetation removal report* must be submitted with your application for a permit to remove, destroy or lop native vegetation.

Refer to the *Guidelines for the removal, destruction or lopping of native vegetation* (the Guidelines) for a full list of application requirements. This report provides information that meets the following application requirements:

- The assessment pathway and reason for the assessment pathway
- A description of the native vegetation to be removed (partly met)
- Maps showing the native vegetation and property (partly met)
- Information about the impacts on rare or threatened species.
- The offset requirements determined in accordance with section 5 of the Guidelines that apply if approval is granted to remove native vegetation.

Additional application requirements must be met including:

- Topographical and land information
- Recent dated photographs
- Details of past native vegetation removal
- An avoid and minimise statement
- A copy of any Property Vegetation Plan that applies
- A defensible space statement as applicable
- A statement about the Native Vegetation Precinct Plan as applicable
- A site assessment report including a habitat hectare assessment of any patches of native vegetation and details of trees
- An offset statement that explains that an offset has been identified and how it will be secured.

© The State of Victoria Department of Environment, Land, Water and Planning Melbourne 2021

This work is licensed under a Creative Commons Attribution 4.0 International licence. You are free to re-use the work under that licence, on the condition that you credit the State of Victoria as author. The licence does not apply to any images, photographs or branding, including the Victorian Coat of Arms, the Victorian Government logo and the Department of Environment, Land, Water and Planning logo. To view a copy of this licence, visit <http://creativecommons.org/licenses/by/3.0/au/deed.en>

Authorised by the Victorian Government, 8 Nicholson Street, East Melbourne.

For more information contact the DELWP Customer Service Centre 136 186

www.delwp.vic.gov.au

Disclaimer

This publication may be of assistance to you but the State of Victoria and its employees do not guarantee that the publication is without flaw of any kind or is wholly appropriate for your particular purposes and therefore disclaims all liability for any error, loss or other consequence which may arise from you relying on any information in this publication.

Obtaining this publication does not guarantee that an application will meet the requirements of Clauses 52.16 or 52.17 of the Victoria Planning Provisions and Victorian planning schemes or that a permit to remove native vegetation will be granted.

Notwithstanding anything else contained in this publication, you must ensure that you comply with all relevant laws, legislation, awards or orders and that you obtain and comply with all permits, approvals and the like that affect, are applicable or are necessary to undertake any action to remove, lop or destroy or otherwise deal with any native vegetation or that apply to matters within the scope of Clauses 52.16 or 52.17 of the Victoria Planning Provisions and Victorian planning schemes.

Appendix 1: Description of native vegetation to be removed

The species-general offset test was applied to your proposal. This test determines if the proposed removal of native vegetation has a proportional impact on any rare or threatened species habitats above the species offset threshold. The threshold is set at 0.005 per cent of the mapped habitat value for a species. When the proportional impact is above the species offset threshold a species offset is required. This test is done for all species mapped at the site. Multiple species offsets will be required if the species offset threshold is exceeded for multiple species.

Where a zone requires species offset(s), the species habitat units for each species in that zone is calculated by the following equation in accordance with the Guidelines:

$$\text{Species habitat units} = \text{extent} \times \text{condition} \times \text{species landscape factor} \times 2, \text{ where the species landscape factor} = 0.5 + (\text{habitat importance score}/2)$$

The species offset amount(s) required is the sum of all species habitat units per zone

Where a zone does not require a species offset, the general habitat units in that zone is calculated by the following equation in accordance with the Guidelines:

$$\text{General habitat units} = \text{extent} \times \text{condition} \times \text{general landscape factor} \times 1.5, \text{ where the general landscape factor} = 0.5 + (\text{strategic biodiversity value score}/2)$$

The general offset amount required is the sum of all general habitat units per zone.

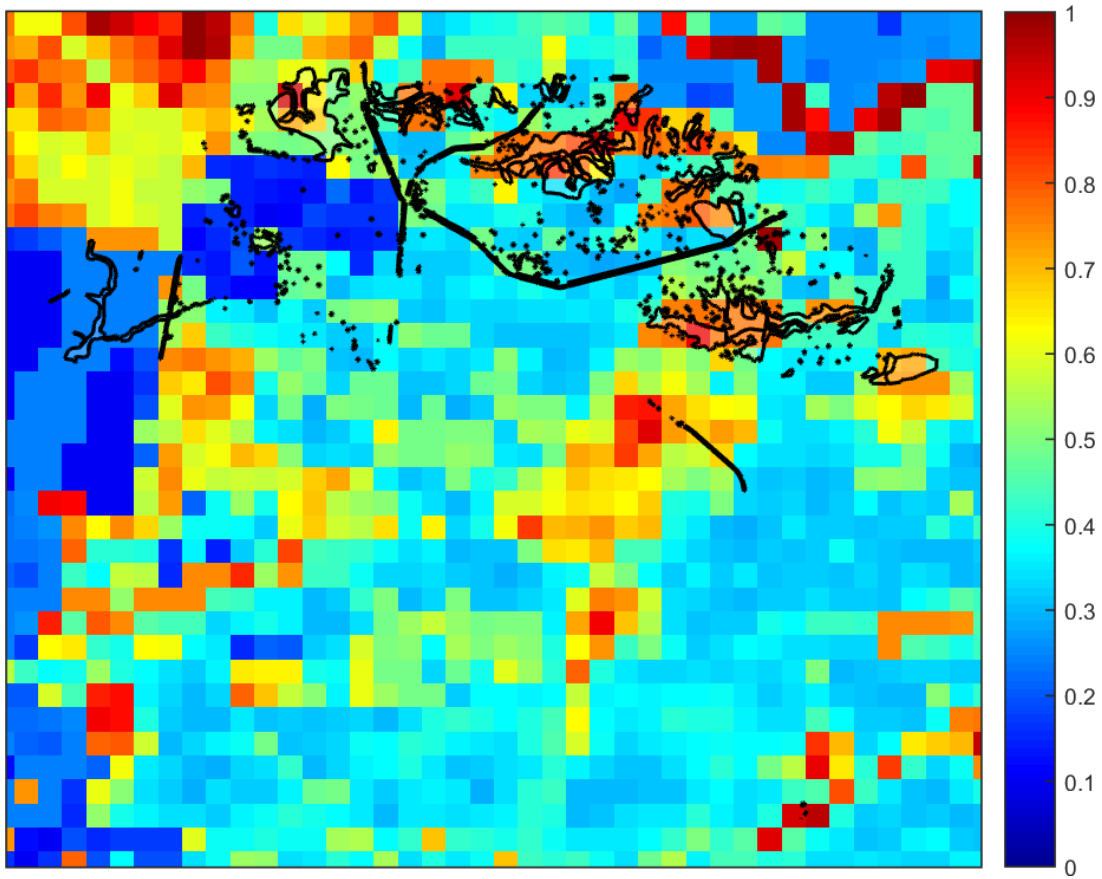
Native vegetation to be removed

Information provided by or on behalf of the applicant in a GIS file							Information calculated by EnSym					
Zone	Type	BioEVC	BioEVC conservation status	Large tree(s)	Partial removal	Condition score	Polygon Extent	Extent without overlap	SBV score	HI score	Habitat units	Offset type

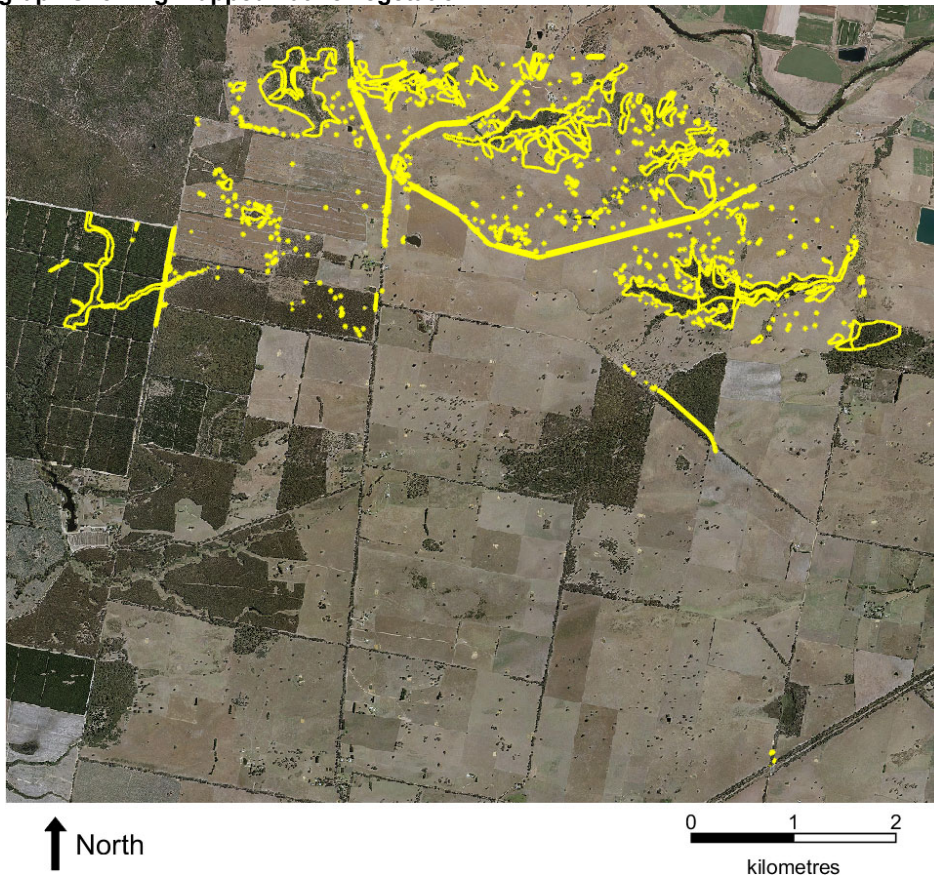
Refer to accompanying Excel spreadsheet, which must be included with this report in any application – 'Native Veg to be removed' tab

Appendix 3 – Images of mapped native vegetation

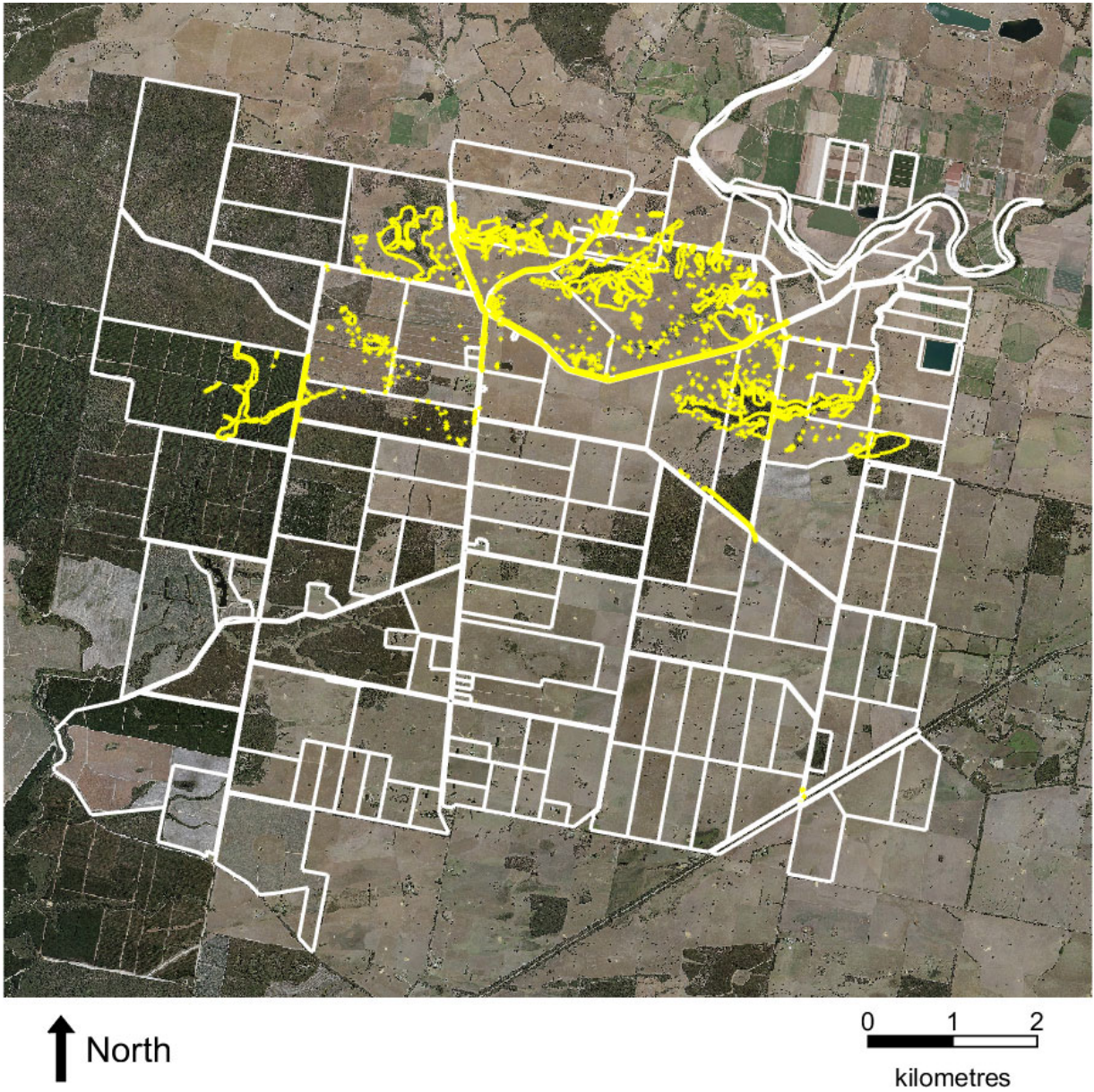
2. Strategic biodiversity values map



3. Aerial photograph showing mapped native vegetation



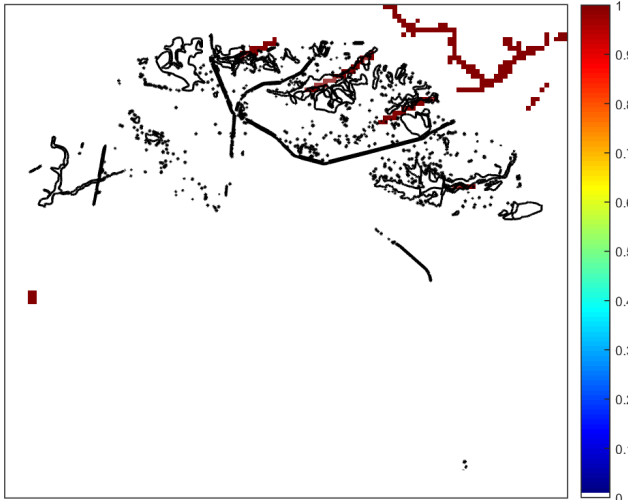
4. Map of the property in context



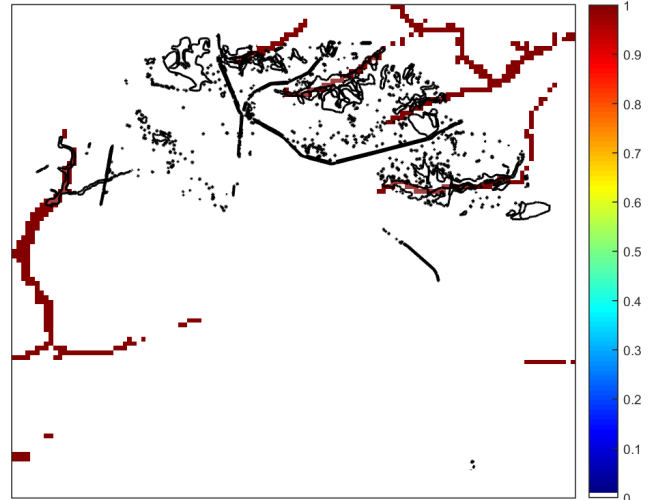
Yellow boundaries denote areas of proposed native vegetation removal.

4. Habitat importance maps

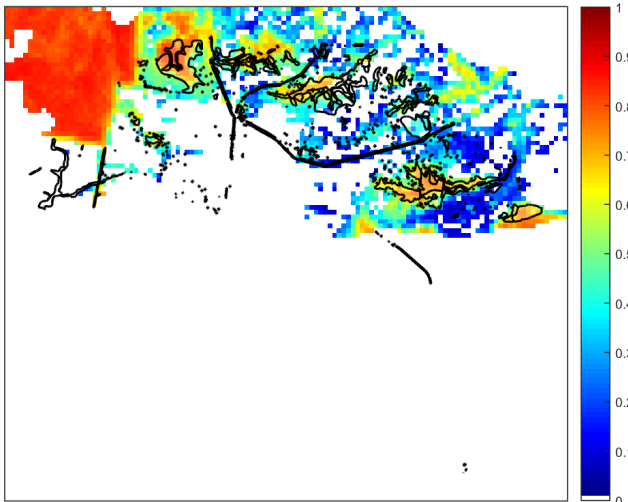
Australian Grayling
Prototroctes maraena
4686



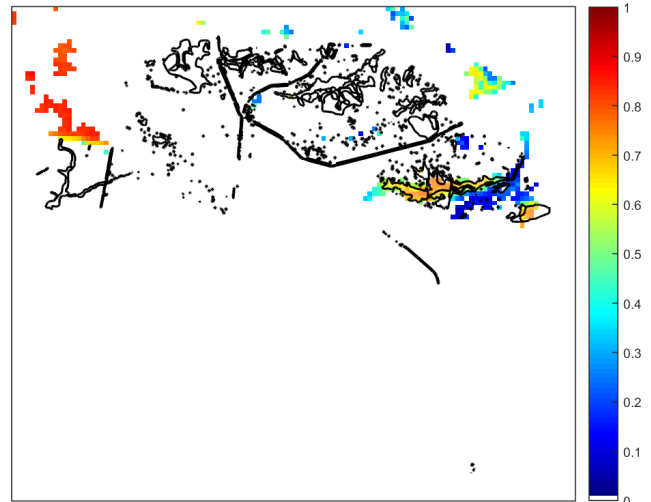
Flinders Pygmy Perch
Nannoperca sp. 1
903041



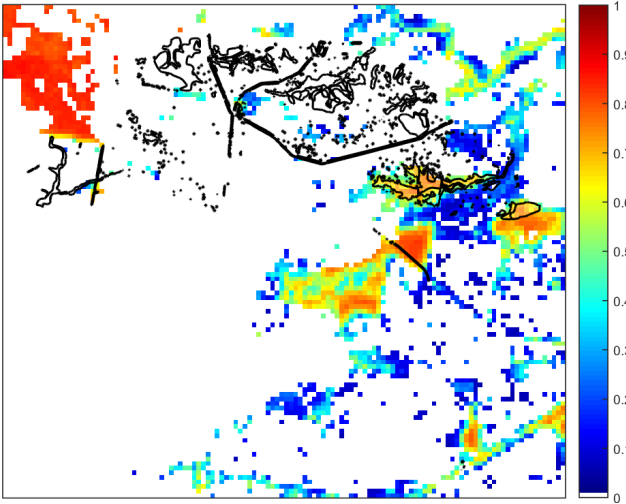
Sticky Wattle
Acacia howittii
500044



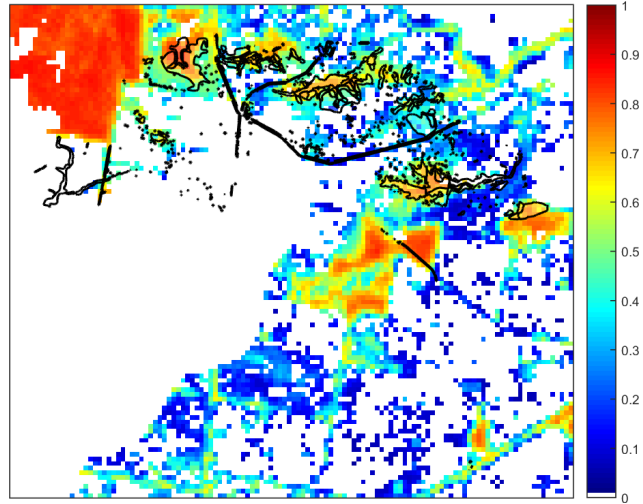
Yellow-wood
Acronychia oblongifolia
500116



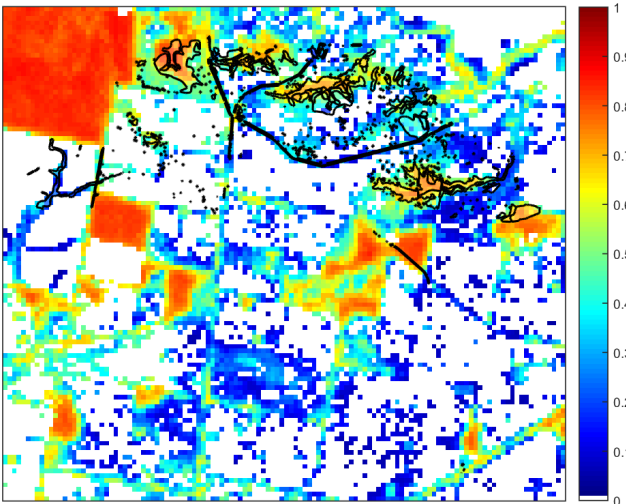
Thick-lip Spider-orchid
Caladenia tessellata
500547



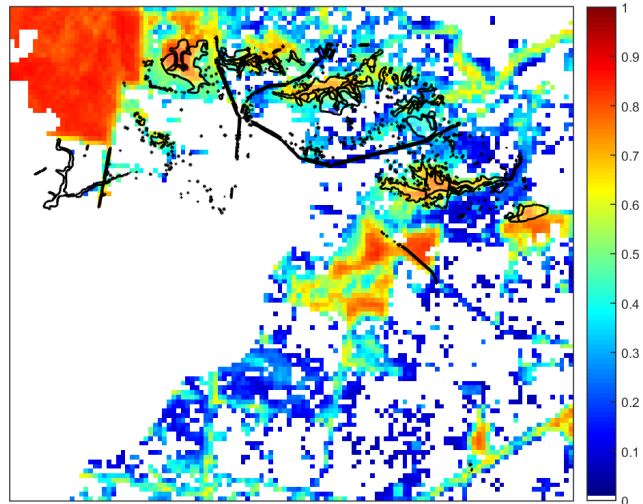
Purple Diuris
Diuris punctata
501084



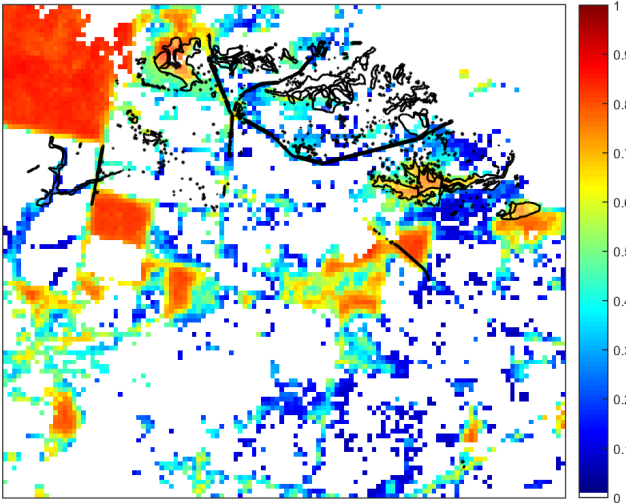
Bushy Hedgehog-grass
Echinopogon caespitosus var. *caespitosus*
501120



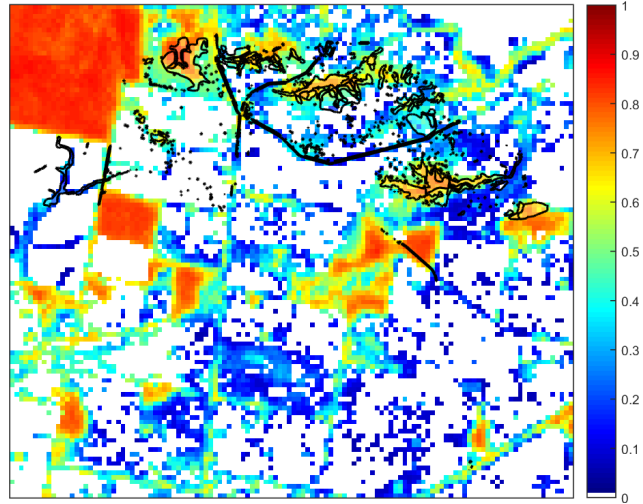
Rough-grain Love-grass
Eragrostis trachycarpa
501197



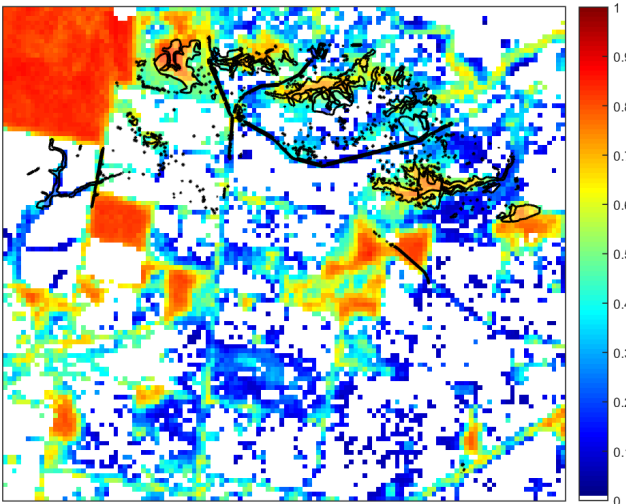
Slender Violet-bush
Hybanthus monopetalus
501711



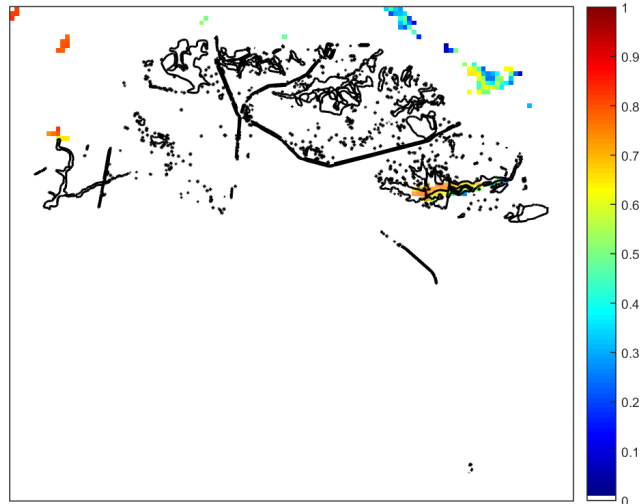
Slender Wire-lily
Laxmannia gracilis
501889



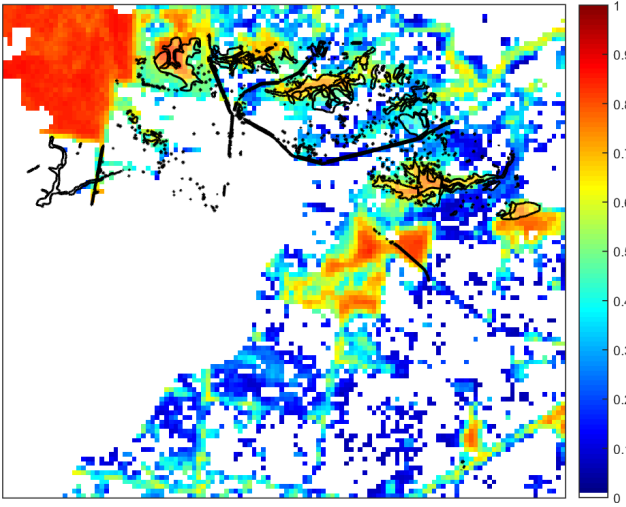
Golden Pomaderris
Pomaderris aurea
502651



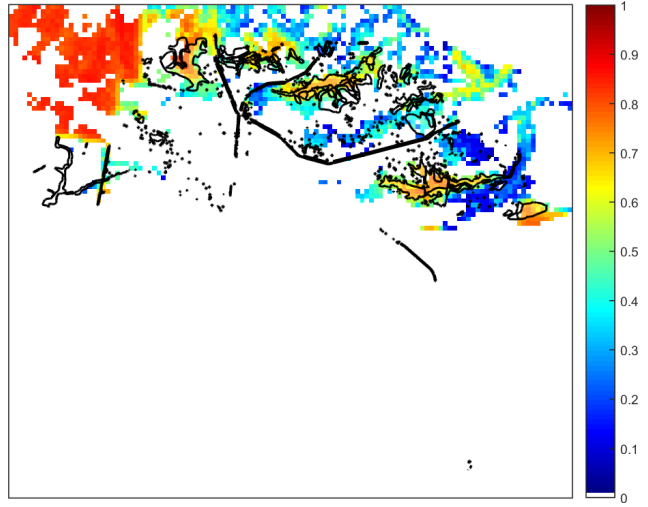
Star Cucumber
Sicyos australis
503139



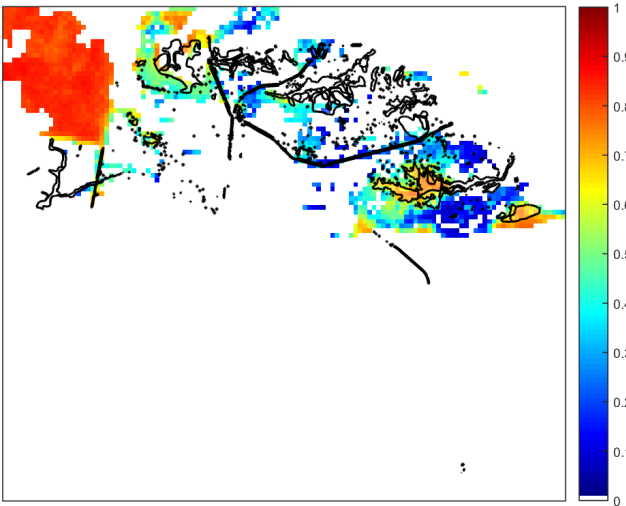
One-flower Early Nancy
Wurmbea uniflora
503583



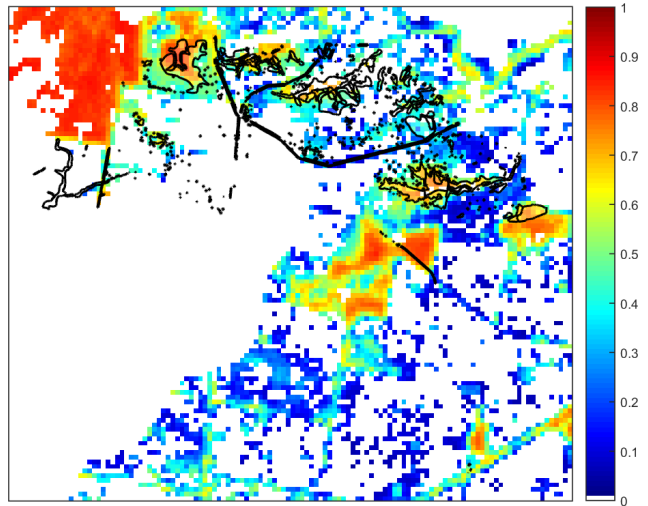
Limestone Blue Wattle
Acacia caerulescens
503633



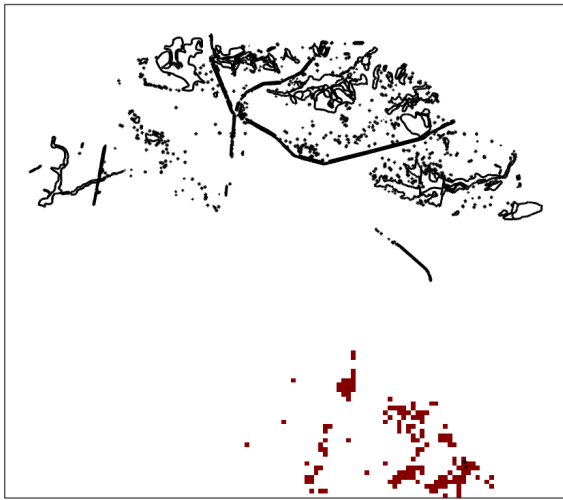
Thin-leaf Daisy-bush
Olearia curticoma
503904



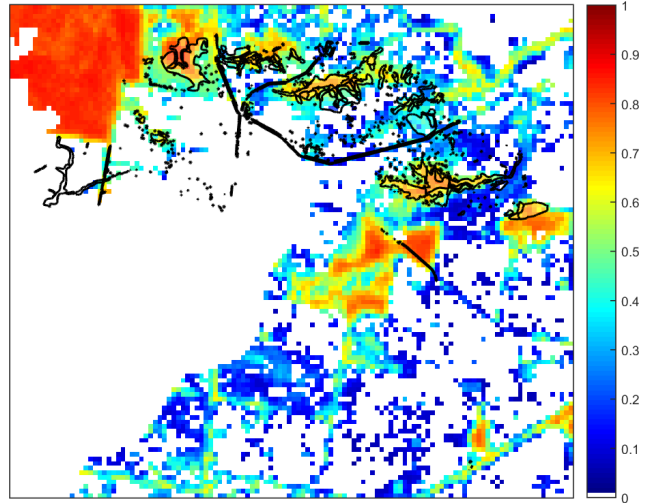
Forest Red-box
Eucalyptus polyanthemos subsp. *longior*
504754



Gaping Leek-orchid
Prasophyllum correctum
504850



Silky Kidney-weed
Dichondra sp. 1
505786



Heath Spider-orchid
Caladenia peisleyi
505890

