

# Simon Perrin

(Anaesthetist - Retired Active Practice 2016)

**Mining Spokesperson Bendigo & District Environment Council Inc.**

“Trust no-one, believe no-one.....”

1

## Fingerboards Presentation

### Outline of Presentation

1. BDEC's history with regard to mining - v. brief
2. Accepting Consultants Advice
3. Regulatory Failure and Loss of Control
4. Flaws in EES process - follow the money
- +/-  
5. Comments on radionuclide contamination

2

## Fingerboards Presentation

### 1. BDEC's history with regard to mining

- Origins of BDEC
- 9 Mining EE's

Qualifications of BDEC members

3

## Fingerboards Presentation

### BDEC Qualifications

#### Tertiary and post tertiary qualifications in:

Environmental science  
Zoology  
Ecology  
Land development  
Biology  
Botany (particularly with regional focus)  
Physics  
Engineering  
Mathematics  
Medicine  
Law

4

## Fingerboards Presentation

### Previously employed in environmental projects by:

- \* Local Councils (including City of Greater Bendigo)
- \* State governments
- \* Environment Victoria
- \* The former Land Conservation Council / VEAC
- \* UNESCO

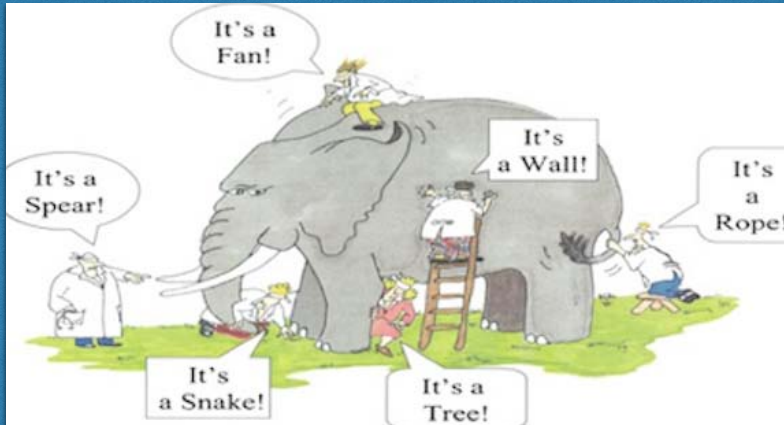
\* **3 Local Field Naturalists / Ecologists with 30+ years experience**

## Fingerboards Presentation

### **2. Accepting Consultants Opinions unchallenged**

## Fingerboards Presentation

### 2. Accepting Consultants Advice



7

## Fingerboards Presentation

Driscoll DA, Garrard GE, Kusmanoff AM, et al.

**Consequences of information suppression in ecological and conservation sciences.**

*Conservation Letters*.2020;e 12757.

<https://doi.org/10.1111/conl.12757e>

8

## Fingerboards Presentation

### 2. Accepting Consultants Advice

a) **Government (34%)** and **industry (30%)** respondents reported interference by employers in what was presented

University respondents (5%)

b) **Internal communications (29%)** and **media (28%)** were most curtailed

eg. In the Mining industry - failure to declare alterations to draft versions

c) **No enforceable Code of Conduct for consultants at hearings**

d) **IAC expects that expert witnesses are aware they have a paramount duty to the IAC (rather than to their client)**

9

#### MERCURY USES IN CANADA AND THEIR POSSIBLE HAZARDS AS SOURCES OF MERCURY CONTAMINATION

NORVALD FIMREITE

*Department of Zoology, University of Western Ontario, London, Canada*

##### ABSTRACT

*During the past ten years mercury consumption has shown a strong upward trend in Canada. The major proportion of this increase can be accounted for by the chlor-alkali industry, from which nearly 200,000 lb (90,000 kg) of mercury are released into the environment each year. Most of this mercury finds its way to watercourses exposing aquatic ecosystems where mercury is known to accumulate. The use of mercury compounds for slime control in the Canadian pulp industry is decreasing, but in one case elevated mercury levels in fish were traced back to such a source. Also decreasing is the use of seed-dressings containing mercury, although this use of mercurials is still considerable, and in view of findings in other countries elevated mercury levels in seed-eating birds and their predators must be expected. Elevated levels of mercury were found in pheasants and partridges collected in Southern Alberta where mercury seed-dressings are extensively used.*

##### INTRODUCTION

Mercury has been known as a toxic agent since the time of the earliest medical authors and as an occupational hazard, in certain industries, it has received much

10

## Fingerboards Presentation

### 2. Accepting Consultants Opinions unchallenged

Risk Matrices

11

## Fingerboards Presentation

### 2. Accepting Consultants Opinions unchallenged

#### Examples

**Ausenco's apparently modified report**

#### GUIDANCE NOTES FOR THOSE SEEKING REGISTRATION (ACTRA)

10. This section is intended to identify those activities demonstrating a high level of recognition for expertise in and practice of toxicology and/or risk assessment. In particular, **this section seeks evidence that the candidate's expertise is recognized and valued by third parties.... such as employers.....** and other external scientific bodies.

12

## Fingerboards Presentation

### 3. Regulatory Failure and Loss of Control

Carlsharlton  
Costerfield  
Woodvale  
Rehabilitation

13

## Fingerboards Presentation

### 3. Regulatory Failure

**Page 57 Deborah Gold Project Panel Report 1998"**

**"The proposed end use of the Carshalton site is the return to Box Ironbark forest while retaining the area for use as an Historic Reserve.**

**A significant proportion of proposed rehabilitation works will be completed during and immediately following the decline development phase."**

14

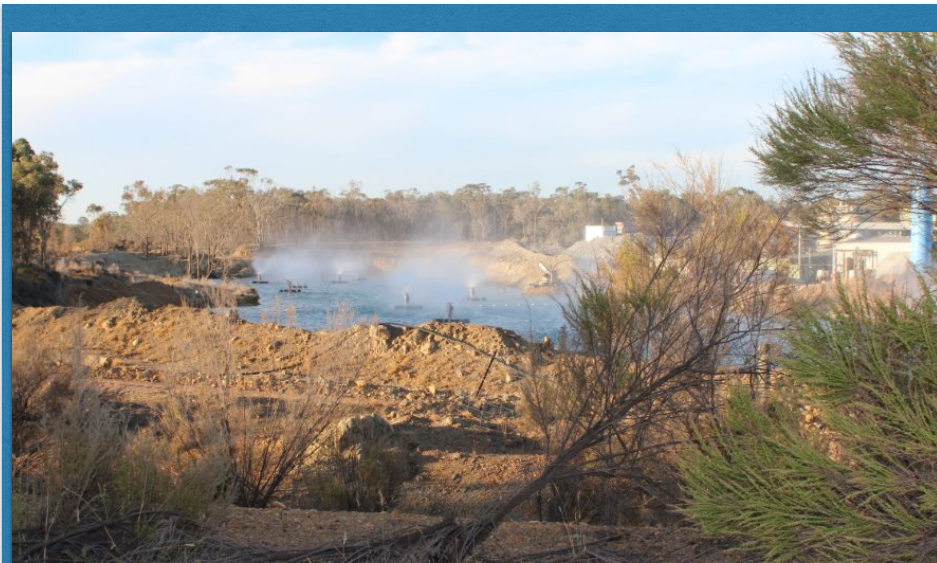
## Fingerboards Presentation



15

## Fingerboards Presentation

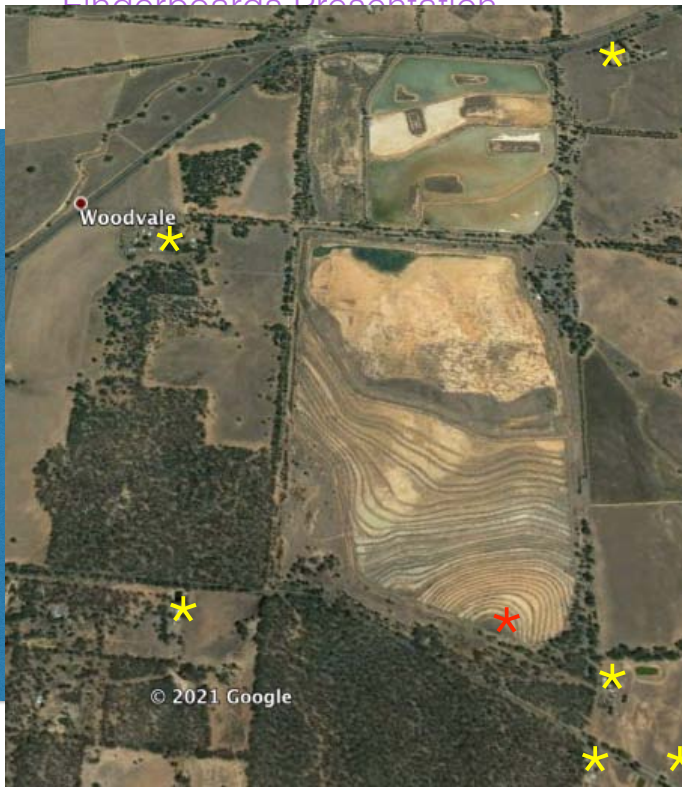
Brunswick Pit



16



Fingerboards Presentation



Fingerboards Presentation

3. Regulatory Failure and Loss of Control

Environmental Review Committee's

Costerfield

Woodvale / Bendigo

## Fingerboards Presentation

### 4. Flaws in this EES process

the

Alterman, Harris and Hill 1984; Planning for Public Participation: The Design of Implementation Strategies; Environment and Planning ; p. 183

a) "planning authorities are likely to view their relationship with the major elites as consultation, but similar status was not afforded voluntary bodies or members of the public at large"

b) Decision to conduct EES via Zoom

c) "Consultative and Collaborative Process"

d) No rules of evidence

e) Conclaves Agree II

g) "Further Investigation AFTER EES "

h) Proposal mutation with "Adaptive Management"

j) IAC expects that expert witnesses are aware they have a paramount duty to the IAC (rather than to their client)

**THE CUMULATIVE EFFECT OF THE ABOVE IS TO DISENFRANCHISE COMMUNITY MEMBERS**

19

## Fingerboards Presentation

### 4. Flaws in EES process - follow the money

Environmental Management  
DOI 10.1007/s00267-016-0785-0



#### Adaptive Management as an Effective Strategy: Interdisciplinary Perceptions for Natural Resources Management

Lindsay M. Dreiss<sup>1</sup> · Jan-Michael Hessemer<sup>1</sup> · Lucas R. Nathan<sup>1</sup> ·  
Kelly M. O'Connor<sup>1</sup> · Marjorie R. Liberati<sup>1</sup> · Danielle F. Kloster<sup>1</sup> · Janet R. Barclay<sup>1</sup> ·  
Jason C. Vokoun<sup>1</sup> · Anita T. Morzillo<sup>1</sup>

Received: 18 December 2015 / Accepted: 20 October 2016  
© Springer Science+Business Media New York 2016

**Abstract** Adaptive management is a well-established approach to managing natural resources, but there is little evidence demonstrating effectiveness of adaptive management over traditional management techniques.

20

## Technical Note 0019 page 8

non inclusion of Thorium

Thorium	Group 1	Unclassified	Classification of carcinogenicity based on radiation activity which is not evaluated in this technical note. The 2019 review undertaken by the ATSDR found very limited data on health effects due to exposures to thorium in humans or animals and hence uncertainties on whether the adverse health effects associated with exposure to thorium are the result of the ionizing radiation, the chemical toxicity of thorium, or a combination of radiation and chemical toxicity. The small number of epidemiology studies have primarily focused on the potential increases in the risk of cancer deaths in workers exposed to airborne thorium and its progeny radionuclides. Inhalation, oral, and dermal studies in laboratory animals have identified several potential targets of toxicity however, most studies did not find adverse effects. Toxicity criteria not established by international agencies, likely due to limited/lack of epidemiology or animal toxicity studies. Thorium has therefore not been evaluated further.
---------	---------	--------------	---

## Fingerboards Presentation

WORLD HEALTH ORGANIZATION  
INTERNATIONAL AGENCY FOR RESEARCH ON CANCER

**IARC MONOGRAPHS**  
ON THE  
**EVALUATION OF CARCINOGENIC  
RISKS TO HUMANS**

***Ionizing Radiation, Part 2:  
Some Internally Deposited Radionuclides***

VOLUME 78

This publication represents the views and expert opinions  
of an IARC Working Group on the  
Evaluation of Carcinogenic Risks to Humans,  
which met in Lyon,  
14–21 June 2000

2001

## Fingerboards Presentation

### Page 479 SUMMARY OF DATA REPORTED AND EVALUATION

#### Internalized radionuclides that emit $\alpha$ -particles are *carcinogenic to humans* (Group 1).

In making this overall evaluation, the Working Group took into consideration the following:

- All radionuclides that emit  $\alpha$ -particles and that have been adequately studied, including radon-222 and its decay products, have been shown to cause cancer in humans and in experimental animals.

23

# Simon Perrin

(Anaesthetist - Retired Active Practice 2016)

**Mining Spokesperson Bendigo & District Environment Council Inc.**

“Trust no-one, believe no-one,... follow the money....”

&Thank - you for your time

24