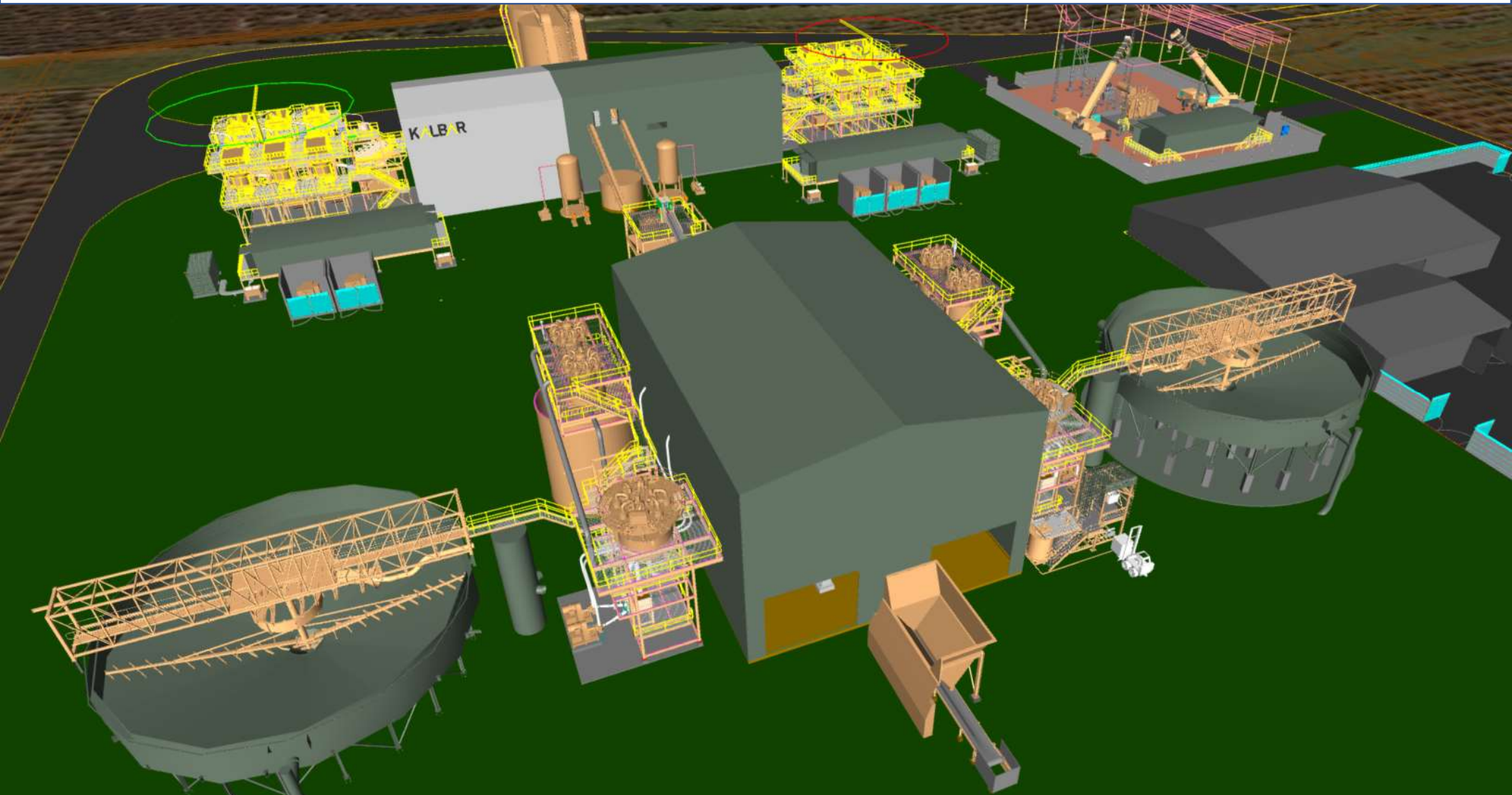


View of the process plant looking north from Limpyers Road, with the water storage dam in the background. Process water dams on the left and the contingency water dams on the right.



Close up view of the WCP. Screening and de-sliming building in the foreground and gravity and magnetic separation building in the background. 66kV substation in the top right corner.



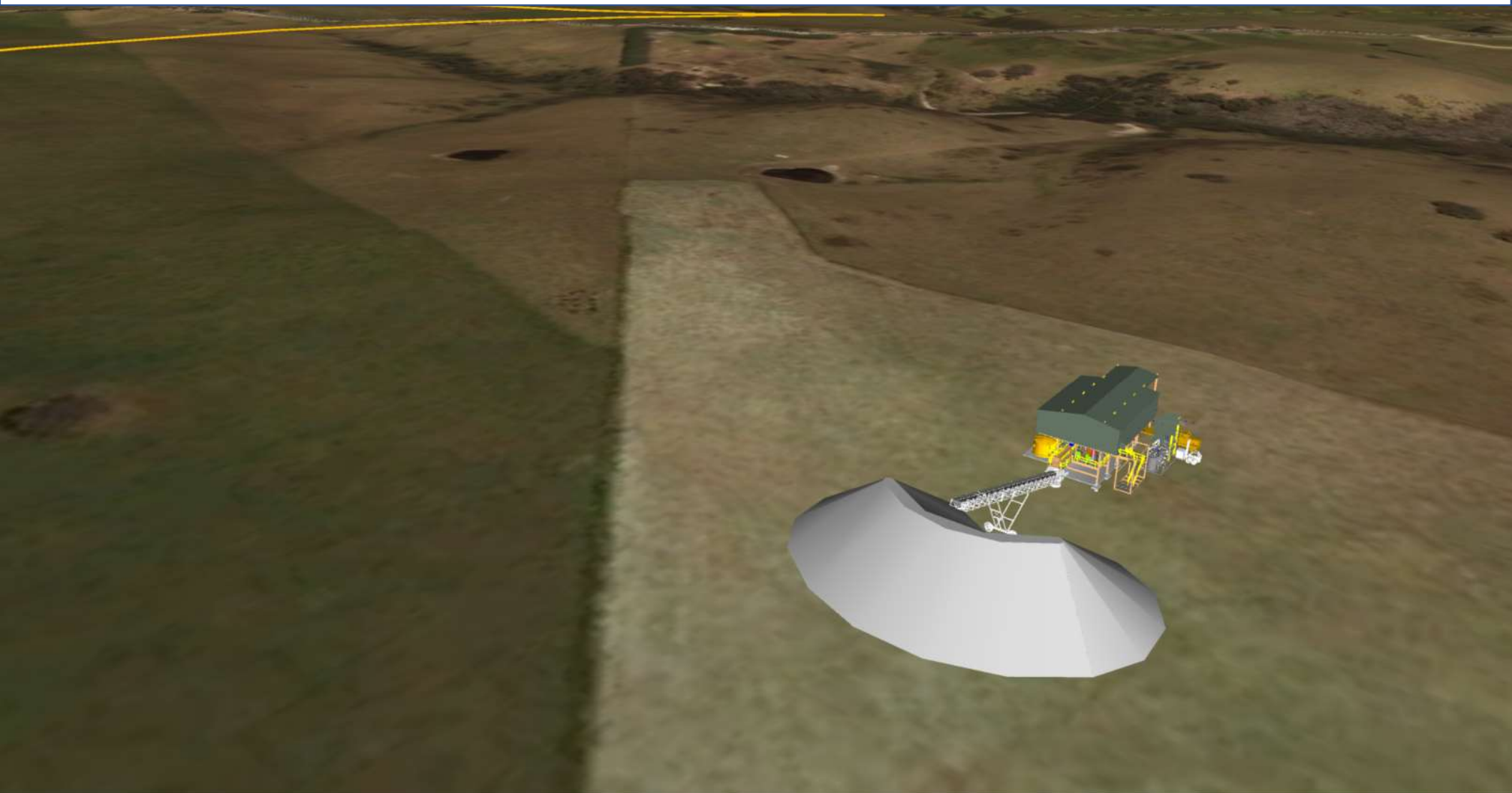
Close up view of the WCP with cladding removed for interior visibility. Screening and de-sliming building in the foreground and gravity and magnetic separation building in the background.



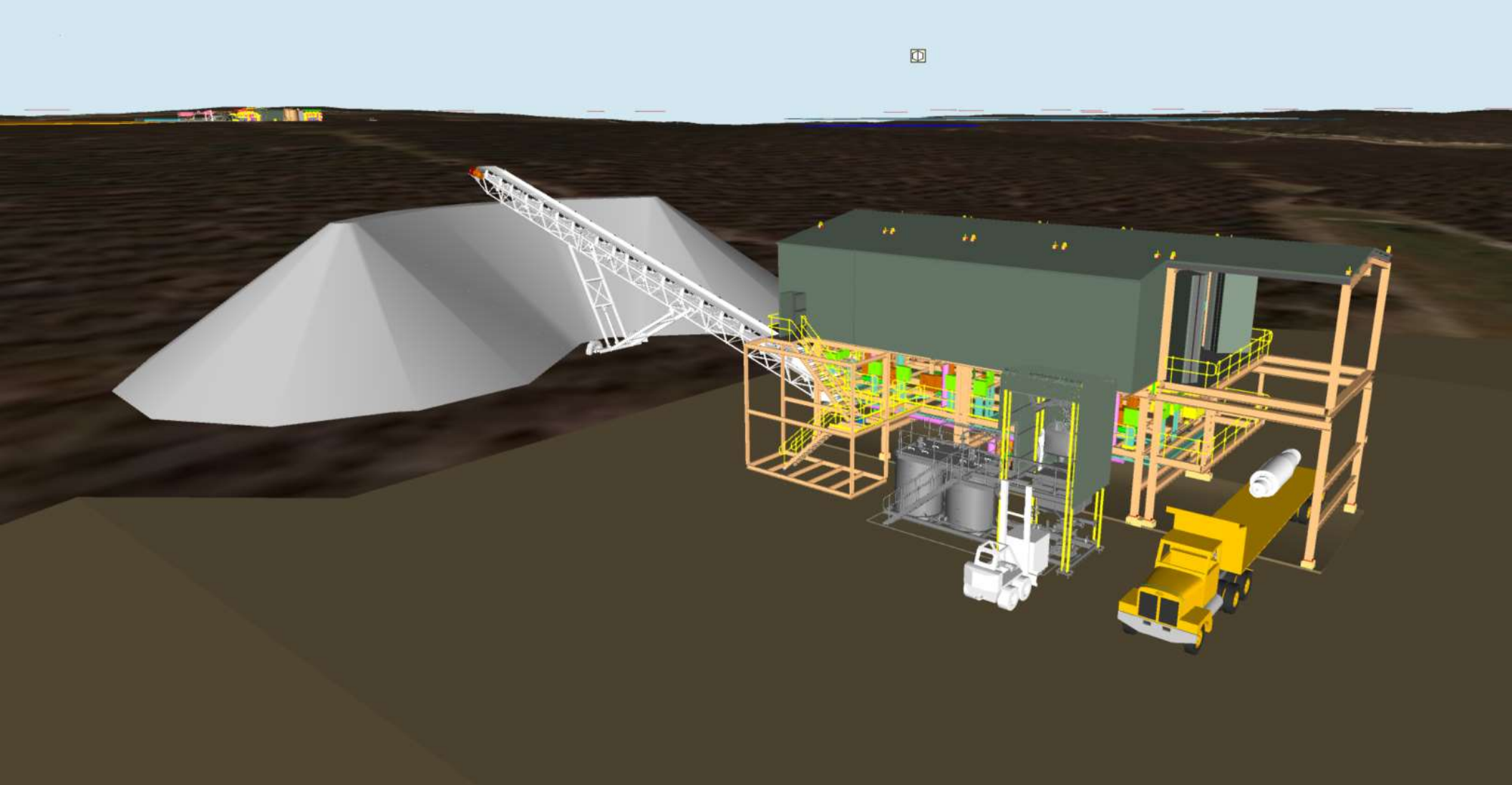
Close up view of the WCP viewed from the west. HMC storage silos for truck loading shown to the left of the magnetic separation building.



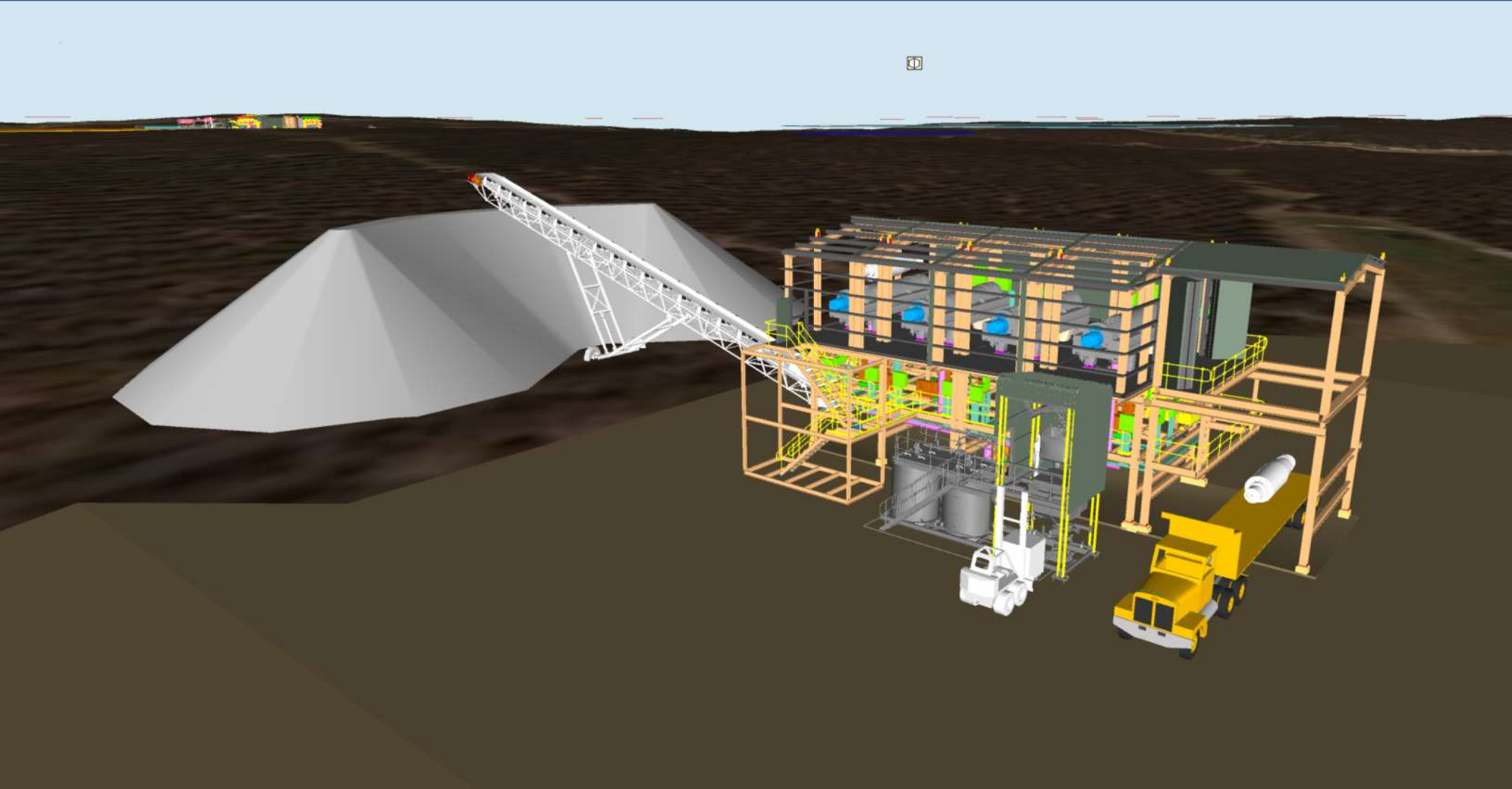
View of the centrifuge building (MUP 1 position, year 1) looking to the north west with Perry Gulley in the background.



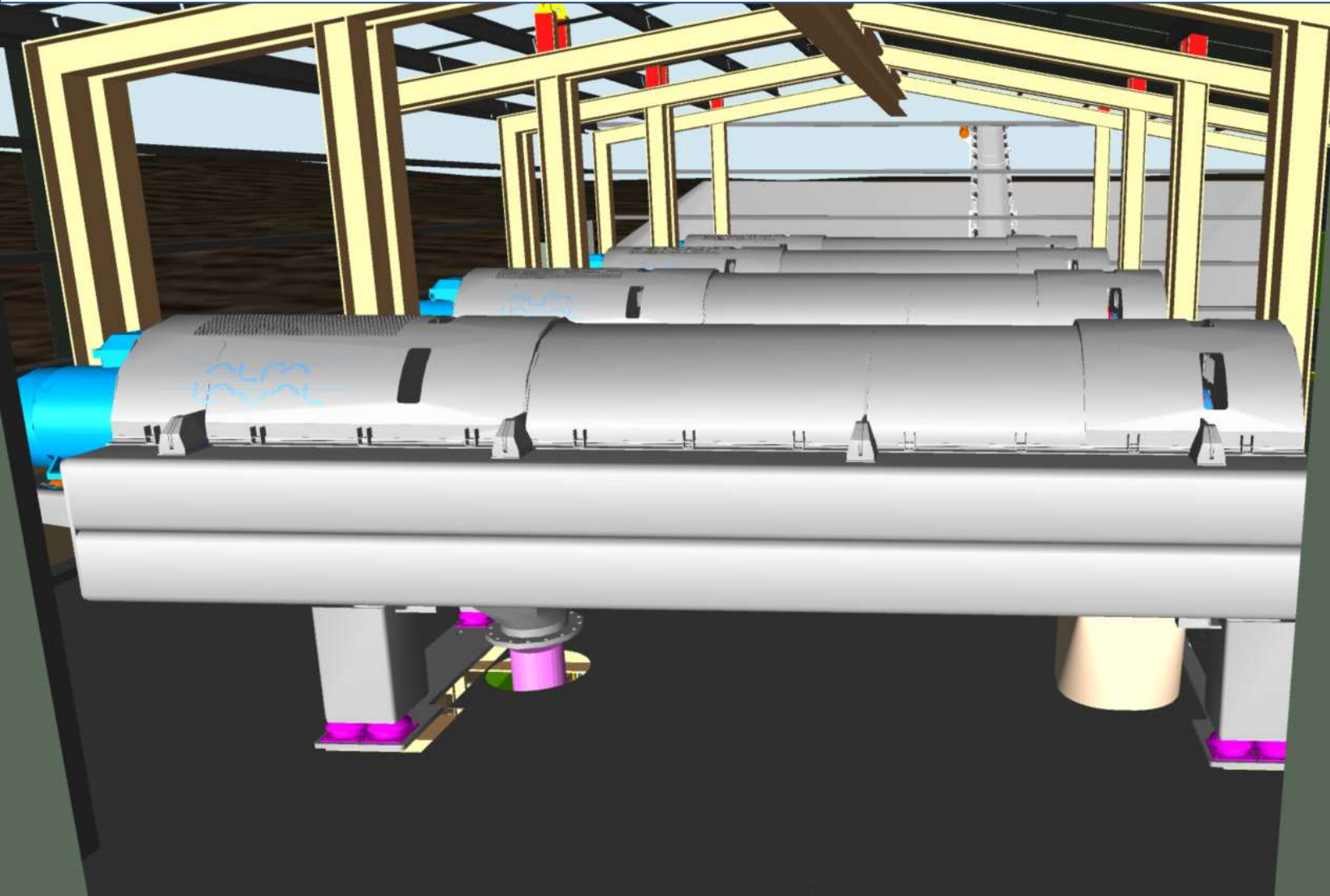
View of the centrifuge building (MUP 2 position, yr 5) looking to the south west with the WCP in the background. Truck on right hand with centrifuge scroll assembly loaded for maintenance refurbishment. Flocculant plant in foreground and cake stockpile visible.



View of the centrifuge building (MUP 2 position, yr 5) with cladding removed for interior visibility. Centrifuges on top level, cake discharge conveyor on mid level and centrate launders on lower level.



Interior view of the centrifuge building with cladding removed, looking toward cake stacking conveyor in the distance.





View of the eastern extent of the project area with the Mitchell River pumpstation and pipeline visible in blue and the Perry Gulley catchment dam in the middle of the page. Project Area boundary shown as a red line.

