

**Fingerboards Mineral Sands Project Inquiry and Advisory Committee**  
**Technical note**

**TN No:** TN 024

**Date:** 19 May 2021

**Subject:** Native vegetation removal reports

---

The additional ecological information report by Ecology & Heritage Partners dated 7 May 2021 (Tabled Document 290) refers to native vegetation removal reports being prepared by DELWP that include updated offset requirements for the Project. Attached are copies of those reports, the accompanying excel spreadsheets that detail biodiversity impacts, and the request by Ecology & Heritage Partners for the updated reports. In particular:

- Attachment 1 sets out the native vegetation removal report for the Project with the preferred Fernbank rail siding option, with the accompanying excel spreadsheet tabled separately;
- Attachment 2 sets out the native vegetation removal report for the Project with the alternative Bairnsdale rail siding option, with the accompanying excel spreadsheet tabled separately; and
- Attachment 3 includes the original request for the updated reports by Ecology & Heritage Partners, together with subsequent clarification emails. Zipped shapefiles were provided with the original request to provide the spatial data required by DELWP to prepare the reports. Copies of these shapefiles have not been included in Attachment 3 given the size of them and the fact that this data is not useful on its own.

## Attachment 1

This report provides information to support an application to remove, destroy or lop native vegetation in accordance with the *Guidelines for the removal, destruction or lopping of native vegetation*. The report is **not an assessment by DELWP** of the proposed native vegetation removal. Native vegetation information and offset requirements have been determined using spatial data provided by the applicant or their consultant.

Date of issue: 07/05/2021  
 Time of issue: 12:59 pm

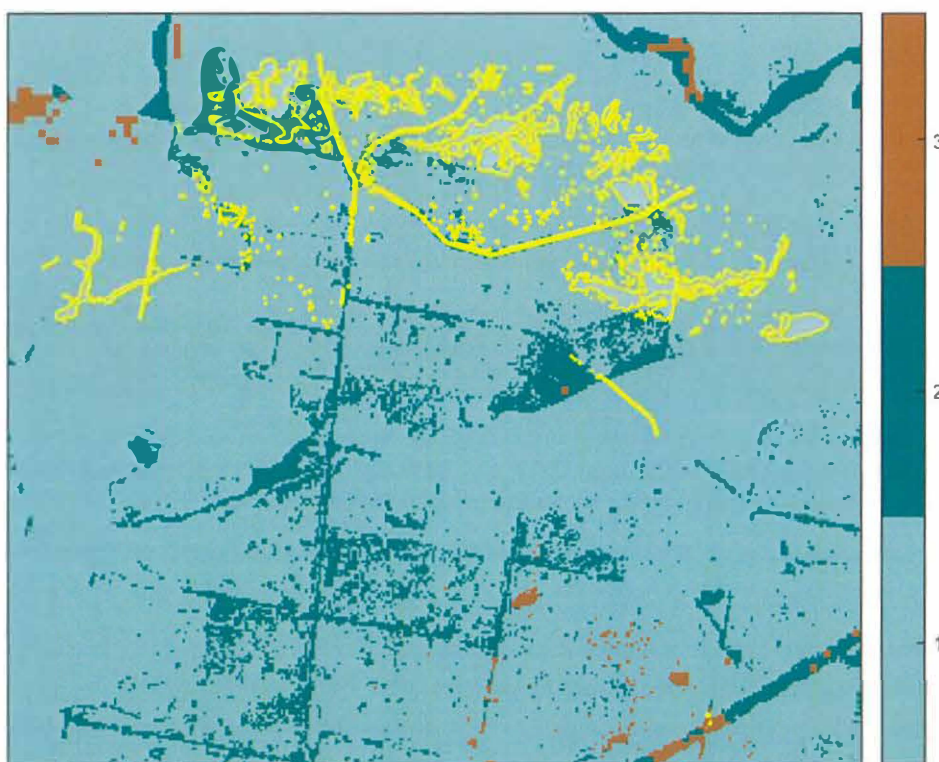
Report ID: EHP\_2021\_047

Project ID EHP7308\_Glenaladale\_VG94\_S1\_CP\_06052021

## Assessment pathway

Assessment pathway	Detailed Assessment Pathway
Extent including past and proposed	249.948 ha
Extent of past removal	0.000 ha
Extent of proposed removal	249.948 ha
No. Large trees proposed to be removed	837
Location category of proposed removal	Location 3 The native vegetation is in an area where the removal of less than 0.5 hectares could have a significant impact on habitat for one or more rare or threatened species. The native vegetation is also in an area mapped as an endangered Ecological Vegetation Class (as per the statewide EVC map).

### 1. Location map



# Native vegetation removal report

## Offset requirements if a permit is granted

Any approval granted will include a condition to obtain an offset that meets the following requirements:

<b>General offset amount<sup>1</sup></b>	1.016 general habitat units
Vicinity	East Gippsland, West Gippsland Catchment Management Authority (CMA) or East Gippsland Shire Council
Minimum strategic biodiversity value score <sup>2</sup>	0.255
Large trees*	47 large trees
<b>Species offset amount<sup>3</sup></b>	<p>34.264 species units of habitat for Australian Grayling, <i>Prototroctes maraena</i></p> <p>63.411 species units of habitat for Flinders Pygmy Perch, <i>Nannoperca sp. 1</i></p> <p>136.537 species units of habitat for Sticky Wattle, <i>Acacia howittii</i></p> <p>38.540 species units of habitat for Yellow-wood, <i>Acronychia oblongifolia</i></p> <p>46.084 species units of habitat for Thick-lip Spider-orchid, <i>Caladenia tessellata</i></p> <p>139.674 species units of habitat for Purple Diuris, <i>Diuris punctata</i></p> <p>144.335 species units of habitat for Bushy Hedgehog-grass, <i>Echinopogon caespitosus var. caespitosus</i></p> <p>140.249 species units of habitat for Rough-grain Love-grass, <i>Eragrostis trachycarpa</i></p> <p>111.068 species units of habitat for Slender Violet-bush, <i>Hybanthus monopetalus</i></p> <p>144.335 species units of habitat for Slender Wire-lily, <i>Laxmannia gracilis</i></p> <p>144.335 species units of habitat for Golden Pomaderris, <i>Pomaderris aurea</i></p> <p>28.412 species units of habitat for Star Cucumber, <i>Sicyos australis</i></p> <p>140.057 species units of habitat for One-flower Early Nancy, <i>Wurmbea uniflora</i></p> <p>130.087 species units of habitat for Limestone Blue Wattle, <i>Acacia caerulescens</i></p> <p>98.648 species units of habitat for Thin-leaf Daisy-bush, <i>Olearia curticomia</i></p> <p>137.980 species units of habitat for Forest Red-box, <i>Eucalyptus polyanthemus subsp. longior</i></p> <p>0.057 species units of habitat for Gaping Leek-orchid, <i>Prasophyllum correctum</i></p> <p>140.249 species units of habitat for Silky Kidney-weed, <i>Dichondra sp. 1</i></p> <p>40.829 species units of habitat for Heath Spider-orchid, <i>Caladenia peisleyi</i></p>
Large trees*	790 trees
<b>* The total number of large trees that the offset must protect</b>	837 large trees to be protected in either the general, species or combination across all habitat units protected

NB: values within tables in this document may not add to the totals shown above due to rounding

Appendix 1 includes information about the native vegetation to be removed

Appendix 2 includes information about the rare or threatened species mapped at the site.

Appendix 3 includes maps showing native vegetation to be removed and extracts of relevant species habitat importance maps

<sup>1</sup> The general offset amount required is the sum of all general habitat units in Appendix 1.

<sup>2</sup> Minimum strategic biodiversity score is 80 per cent of the weighted average score across habitat zones where a general offset is required

<sup>3</sup> The species offset amount(s) required is the sum of all species habitat units in Appendix 1.

# Native vegetation removal report

## Next steps

Any proposal to remove native vegetation must meet the application requirements of the Detailed Assessment Pathway and it will be assessed under the Detailed Assessment Pathway.

If you wish to remove the mapped native vegetation you are required to apply for a permit from your local council. Council will refer your application to DELWP for assessment, as required. **This report is not a referral assessment by DELWP.**

This *Native vegetation removal report* must be submitted with your application for a permit to remove, destroy or lop native vegetation.

Refer to the *Guidelines for the removal, destruction or lopping of native vegetation* (the Guidelines) for a full list of application requirements. This report provides information that meets the following application requirements:

- The assessment pathway and reason for the assessment pathway
- A description of the native vegetation to be removed (partly met)
- Maps showing the native vegetation and property (partly met)
- Information about the impacts on rare or threatened species.
- The offset requirements determined in accordance with section 5 of the Guidelines that apply if approval is granted to remove native vegetation.

Additional application requirements must be met including:

- Topographical and land information
- Recent dated photographs
- Details of past native vegetation removal
- An avoid and minimise statement
- A copy of any Property Vegetation Plan that applies
- A defensible space statement as applicable
- A statement about the Native Vegetation Precinct Plan as applicable
- A site assessment report including a habitat hectare assessment of any patches of native vegetation and details of trees
- An offset statement that explains that an offset has been identified and how it will be secured.

© The State of Victoria Department of Environment, Land, Water and Planning Melbourne 2021

This work is licensed under a Creative Commons Attribution 4.0 International licence. You are free to re-use the work under that licence, on the condition that you credit the State of Victoria as author. The licence does not apply to any images, photographs or branding, including the Victorian Coat of Arms, the Victorian Government logo and the Department of Environment, Land, Water and Planning logo. To view a copy of this licence, visit <http://creativecommons.org/licenses/by/3.0/au/deed.en>

Authorised by the Victorian Government, 8 Nicholson Street, East Melbourne.

For more information contact the DELWP Customer Service Centre 136 186

[www.delwp.vic.gov.au](http://www.delwp.vic.gov.au)

### Disclaimer

This publication may be of assistance to you but the State of Victoria and its employees do not guarantee that the publication is without flaw of any kind or is wholly appropriate for your particular purposes and therefore disclaims all liability for any error, loss or other consequence which may arise from you relying on any information in this publication.

Obtaining this publication does not guarantee that an application will meet the requirements of Clauses 52.16 or 52.17 of the Victoria Planning Provisions and Victorian planning schemes or that a permit to remove native vegetation will be granted.

Notwithstanding anything else contained in this publication, you must ensure that you comply with all relevant laws, legislation, awards or orders and that you obtain and comply with all permits, approvals and the like that affect, are applicable or are necessary to undertake any action to remove, lop or destroy or otherwise deal with any native vegetation or that apply to matters within the scope of Clauses 52.16 or 52.17 of the Victoria Planning Provisions and Victorian planning schemes.

## Appendix 1: Description of native vegetation to be removed

The species-general offset test was applied to your proposal. This test determines if the proposed removal of native vegetation has a proportional impact on any rare or threatened species habitats above the species offset threshold. The threshold is set at 0.005 per cent of the mapped habitat value for a species. When the proportional impact is above the species offset threshold a species offset is required. This test is done for all species mapped at the site. Multiple species offsets will be required if the species offset threshold is exceeded for multiple species.

Where a zone requires species offset(s), the species habitat units for each species in that zone is calculated by the following equation in accordance with the Guidelines:

$$\text{Species habitat units} = \text{extent} \times \text{condition} \times \text{species landscape factor} \times 2, \text{ where the species landscape factor} = 0.5 + (\text{habitat importance score}/2)$$

The species offset amount(s) required is the sum of all species habitat units per zone

Where a zone does not require a species offset, the general habitat units in that zone is calculated by the following equation in accordance with the Guidelines:

$$\text{General habitat units} = \text{extent} \times \text{condition} \times \text{general landscape factor} \times 1.5, \text{ where the general landscape factor} = 0.5 + (\text{strategic biodiversity value score}/2)$$

The general offset amount required is the sum of all general habitat units per zone.

### Native vegetation to be removed

Information provided by or on behalf of the applicant in a GIS file							Information calculated by EnSym						
Zone	Type	BioEVC	BioEVC conservation status	Large tree(s)	Partial removal	Condition score	Polygon Extent	Extent without overlap	SBV score	HI score	Habitat units	Offset type	
1-A	Patch	xx_0000	x	x	xx	x	x	x	x	x	0.000	xxxxxxxx	
										x	0.000	0000 00 xxxxxx	
												0000 00 xxxxxx	
												0000 00 xxxxxx	
											0.000	0000 00 xxxxxx	
										x	0.000	0000 00 xxxxxx	

Refer to accompanying Excel spreadsheet, which must be included with this report in any application – 'Native Veg to be removed' tab

## Appendix 2: Information about impacts to rare or threatened species' habitats on site

This table lists all rare or threatened species' habitats mapped at the site.

Species common name	Species scientific name	Species number	Conservation status	Group	Habitat impacted	% habitat value affected
xxxxxx	xxxxxx	000000	xxxxxx	xxxxxx	xxxxxx	0.0000
xxxxxx	xxxxxx					0.0000
xxxxxx	xxxxxx					0.0000
xxxxxx	xxxxxx					0.0000
xxxxxx	xxxxxx	000000	xxxxxx	xxxxxx	xxxxxx	0.0000

*Refer to accompanying Excel spreadsheet, which must be included with this report in any application – 'Impacts on VROTS habitat' tab*

### Habitat group

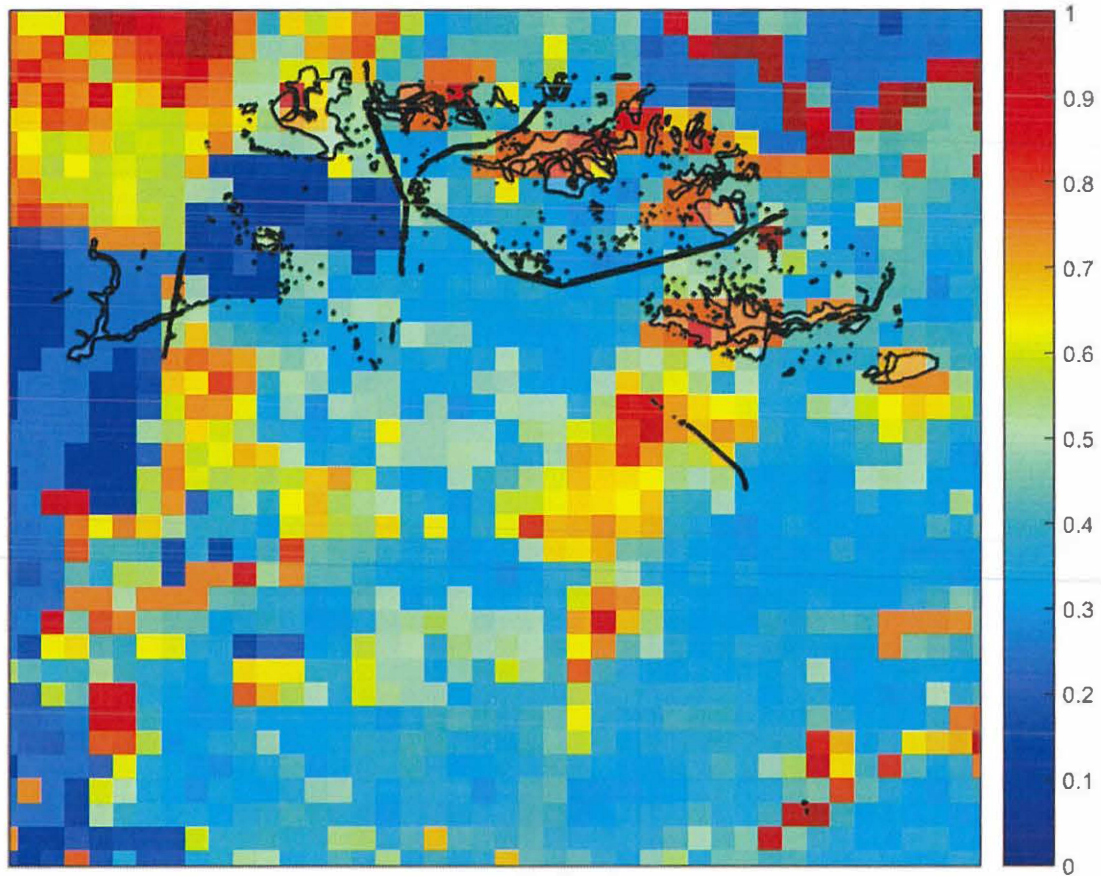
- Highly localised habitat means there is 2000 hectares or less mapped habitat for the species
- Dispersed habitat means there is more than 2000 hectares of mapped habitat for the species

### Habitat impacted

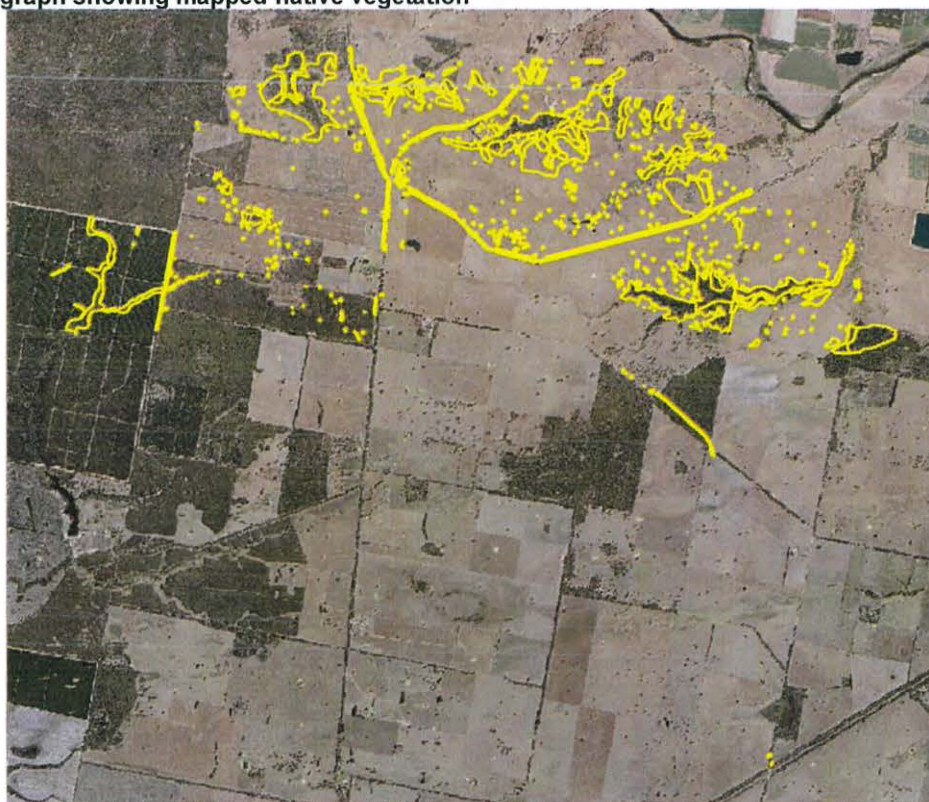
- Habitat importance maps are the maps defined in the Guidelines that include all the mapped habitat for a rare or threatened species
- Top ranking maps are the maps defined in the Guidelines that depict the important areas of a dispersed species habitat, developed from the highest habitat importance scores in dispersed species habitat maps and selected VBA records
- Selected VBA record is an area in Victoria that represents a large population, roosting or breeding site etc.

## Appendix 3 – Images of mapped native vegetation

### 2. Strategic biodiversity values map



### 3. Aerial photograph showing mapped native vegetation

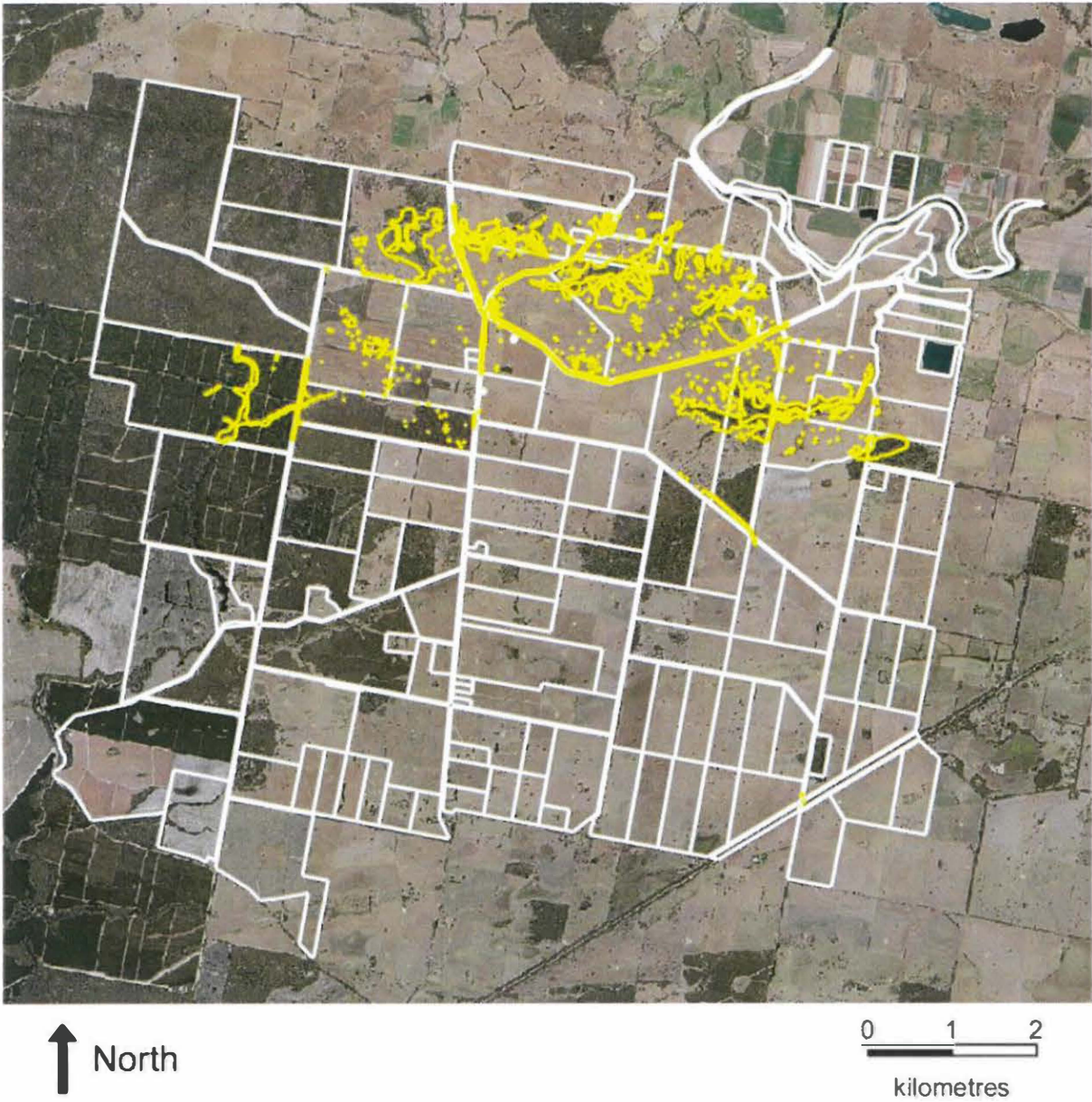


↑ North

0 1 2  
kilometres



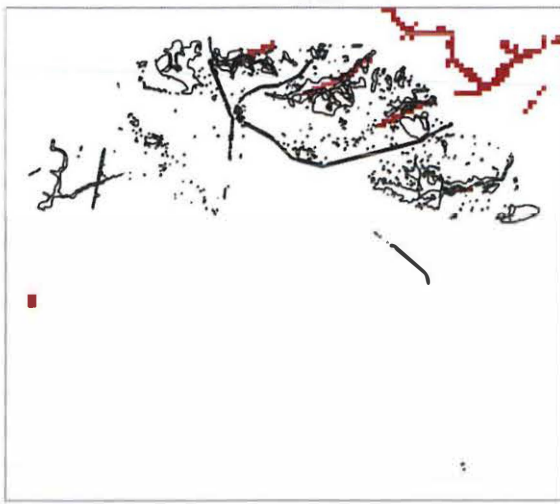
4. Map of the property in context



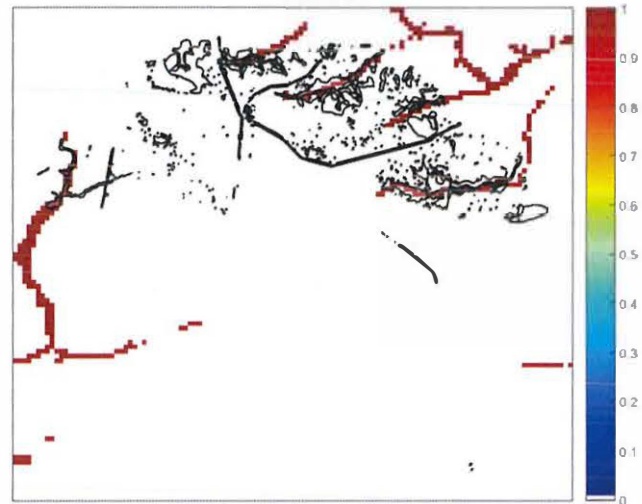
Yellow boundaries denote areas of proposed native vegetation removal.

#### 4. Habitat importance maps

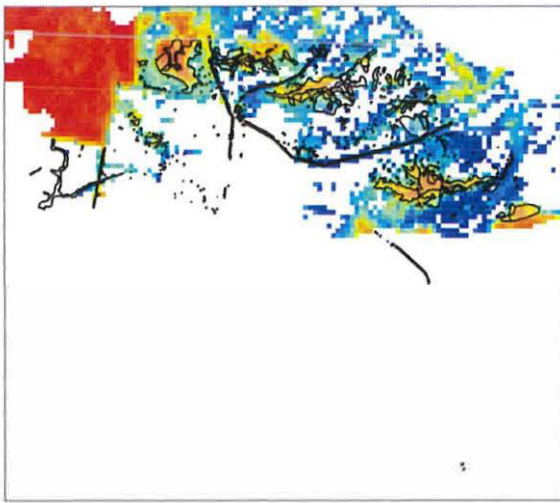
Australian Grayling  
*Prototroctes maraena*  
4686



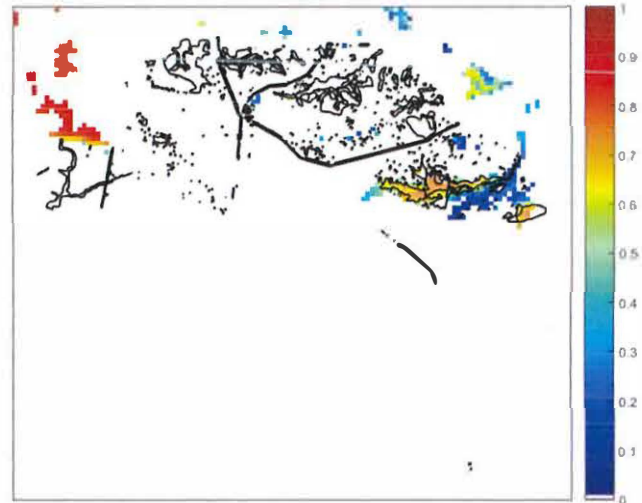
Flinders Pygmy Perch  
*Nannoperca sp. 1*  
903041



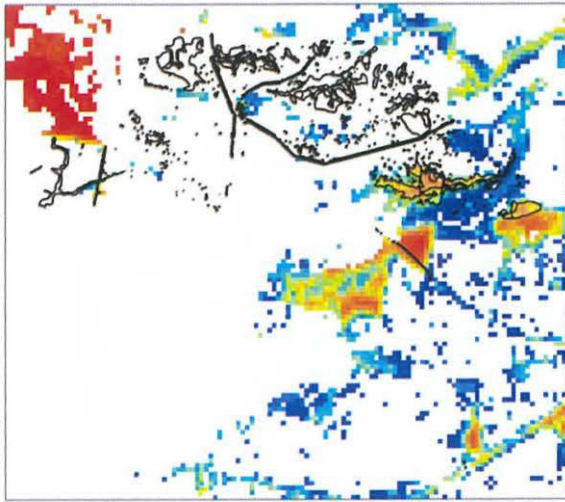
Sticky Wattle  
*Acacia howittii*  
500044



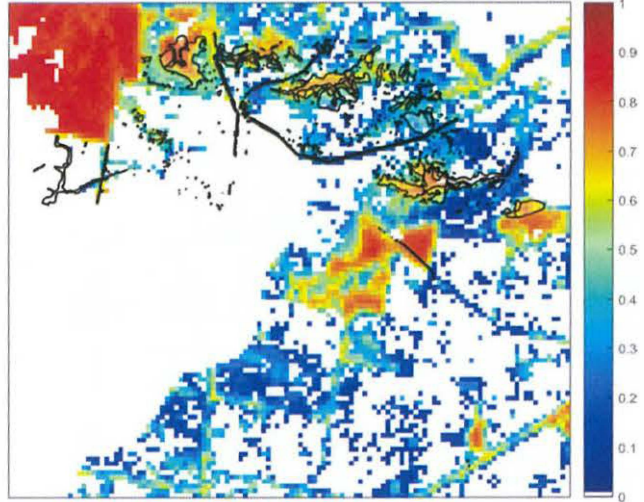
Yellow-wood  
*Acronychia oblongifolia*  
500116



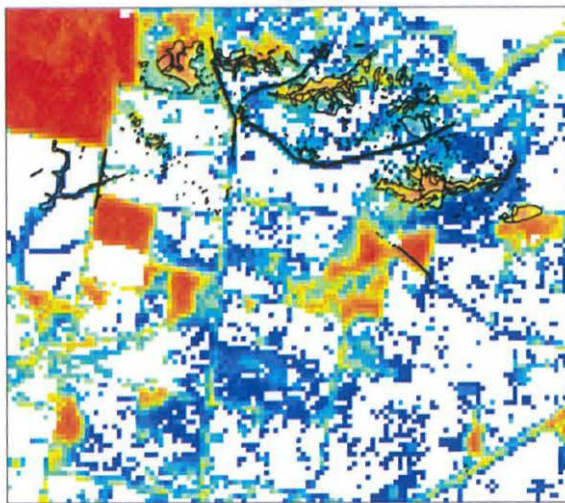
Thick-lip Spider-orchid  
*Caladenia tessellata*  
500547



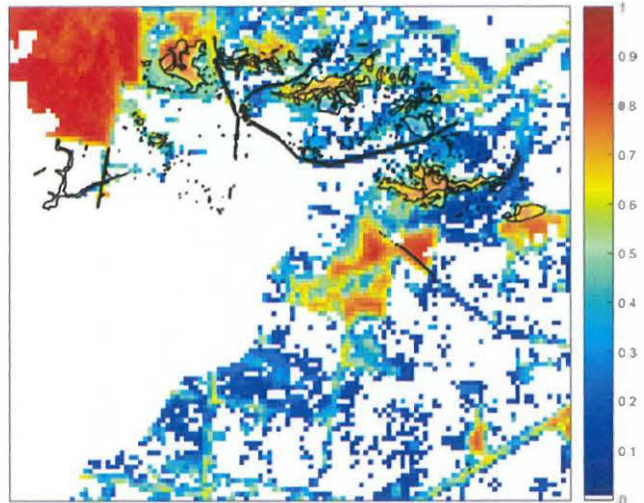
Purple Diuris  
*Diuris punctata*  
501084



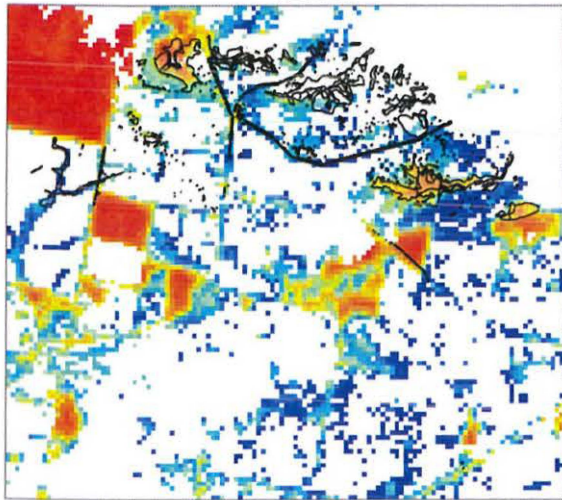
Bushy Hedgehog-grass  
*Echinopogon caespitosus* var. *caespitosus*  
501120



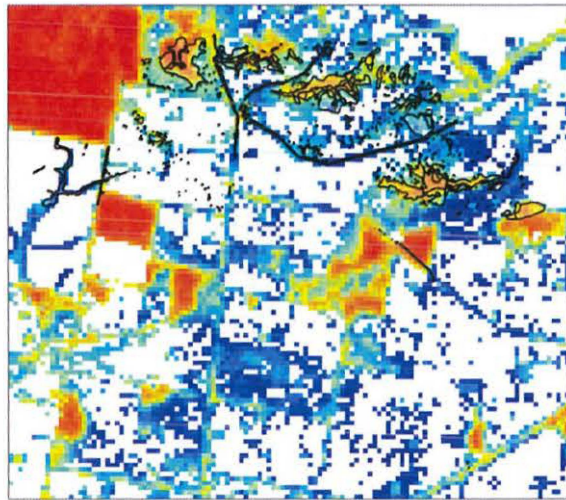
Rough-grain Love-grass  
*Eragrostis trachycarpa*  
501197



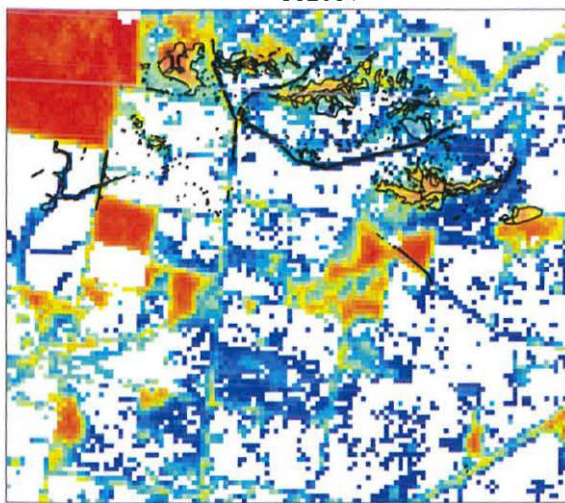
Slender Violet-bush  
*Hybanthus monopetalus*  
501711



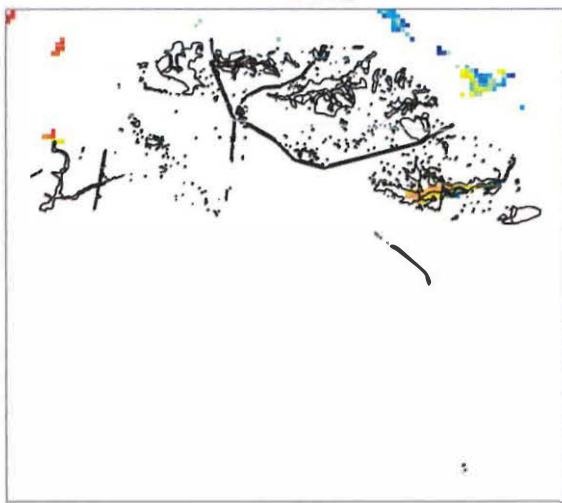
Slender Wire-lily  
*Laxmannia gracilis*  
501889



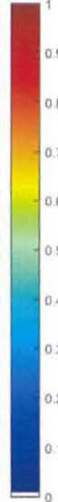
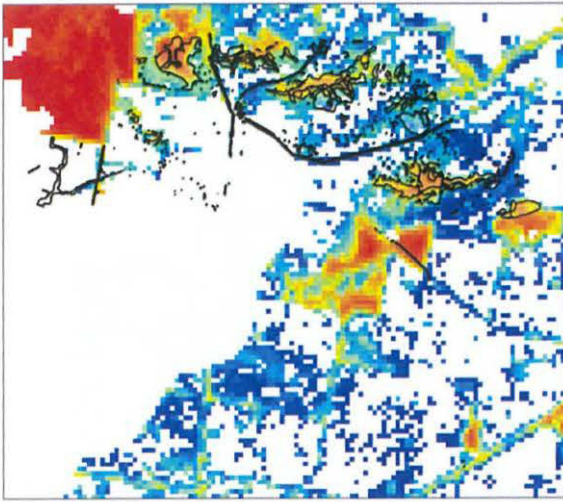
Golden Pomaderris  
*Pomaderris aurea*  
502651



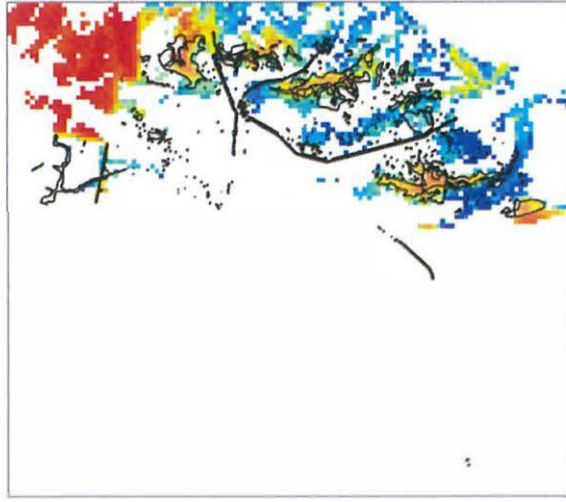
Star Cucumber  
*Sicyos australis*  
503139



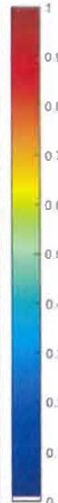
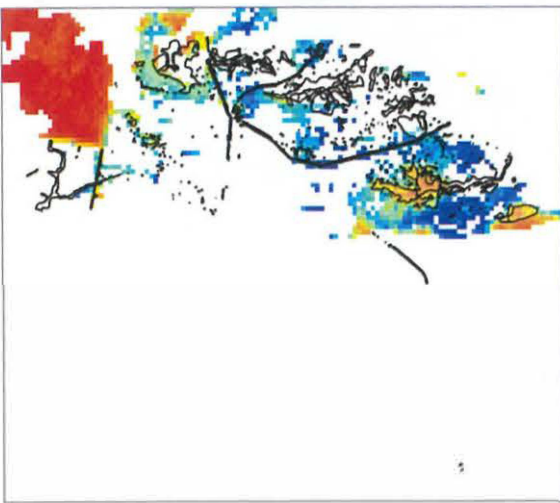
One-flower Early Nancy  
*Wurmbea uniflora*  
503583



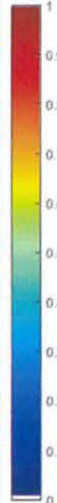
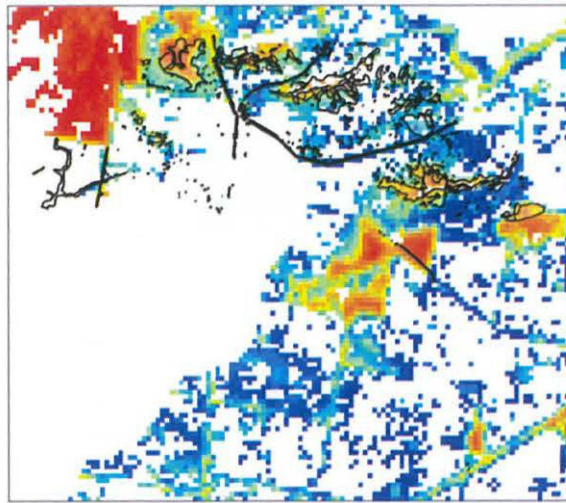
Limestone Blue Wattle  
*Acacia caerulescens*  
503633



Thin-leaf Daisy-bush  
*Olearia curticoma*  
503904



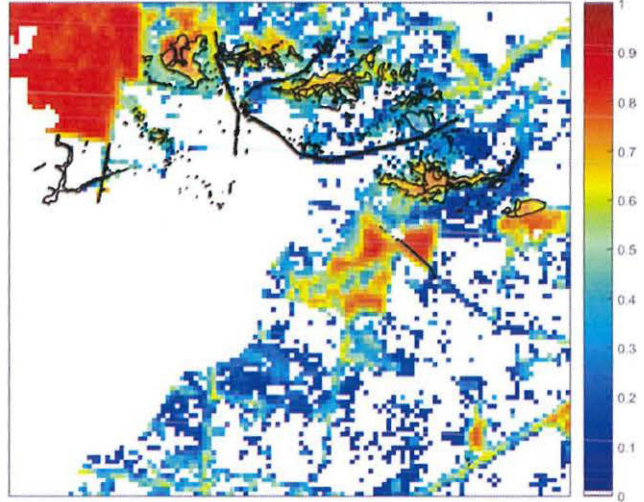
Forest Red-box  
*Eucalyptus polyanthemos subsp. longior*  
504754



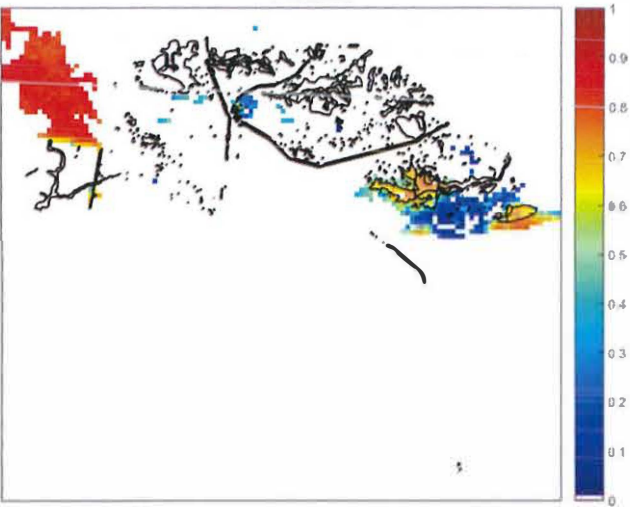
Gaping Leek-orchid  
*Prasophyllum correctum*  
504850



Silky Kidney-weed  
*Dichondra sp. 1*  
505786



Heath Spider-orchid  
*Caladenia peisleyi*  
505890



**Attachment 2**

This report provides information to support an application to remove, destroy or lop native vegetation in accordance with the *Guidelines for the removal, destruction or lopping of native vegetation*. The report **is not an assessment by DELWP** of the proposed native vegetation removal. Native vegetation information and offset requirements have been determined using spatial data provided by the applicant or their consultant.

Date of issue: 08/05/2021  
Time of issue: 12:39 am

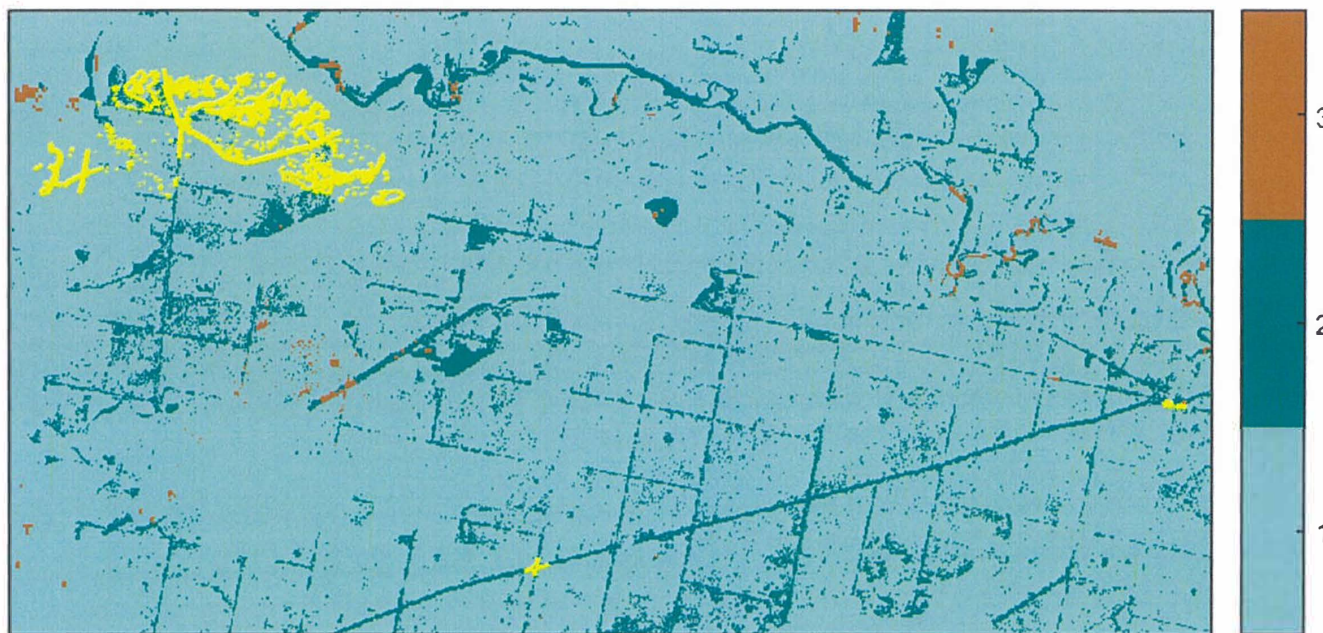
Report ID: EHP\_2021\_048

Project ID EHP7308\_Glenaladale\_VG94\_S2\_CP\_06052021

## Assessment pathway

Assessment pathway	Detailed Assessment Pathway
Extent including past and proposed	251.477 ha
Extent of past removal	0.000 ha
Extent of proposed removal	251.477 ha
No. Large trees proposed to be removed	852
Location category of proposed removal	Location 2 The native vegetation is in an area mapped as an endangered Ecological Vegetation Class (as per the statewide EVC map). Removal of less than 0.5 hectares of native vegetation in this location will not have a significant impact on any habitat for a rare or threatened species.

### 1. Location map





## Offset requirements if a permit is granted

Any approval granted will include a condition to obtain an offset that meets the following requirements:

<b>General offset amount<sup>1</sup></b>	1.010 general habitat units
Vicinity	East Gippsland, West Gippsland Catchment Management Authority (CMA) or East Gippsland Shire Council
Minimum strategic biodiversity value score <sup>2</sup>	0.254
Large trees*	47 large trees
<b>Species offset amount<sup>3</sup></b>	<p>34.264 species units of habitat for Australian Grayling, <i>Prototroctes maraena</i></p> <p>63.411 species units of habitat for Flinders Pygmy Perch, <i>Nannoperca sp. 1</i></p> <p>136.537 species units of habitat for Sticky Wattle, <i>Acacia howittii</i></p> <p>38.540 species units of habitat for Yellow-wood, <i>Acronychia oblongifolia</i></p> <p>45.808 species units of habitat for Thick-lip Spider-orchid, <i>Caladenia tessellata</i></p> <p>141.553 species units of habitat for Purple Diuris, <i>Diuris punctata</i></p> <p>146.215 species units of habitat for Bushy Hedgehog-grass, <i>Echinopogon caespitosus var. caespitosus</i></p> <p>142.129 species units of habitat for Rough-grain Love-grass, <i>Eragrostis trachycarpa</i></p> <p>110.340 species units of habitat for Slender Violet-bush, <i>Hybanthus monopetalus</i></p> <p>146.215 species units of habitat for Slender Wire-lily, <i>Laxmannia gracilis</i></p> <p>144.039 species units of habitat for Golden Pomaderris, <i>Pomaderris aurea</i></p> <p>28.412 species units of habitat for Star Cucumber, <i>Sicyos australis</i></p> <p>141.174 species units of habitat for One-flower Early Nancy, <i>Wurmbea uniflora</i></p> <p>130.087 species units of habitat for Limestone Blue Wattle, <i>Acacia caeruleascens</i></p> <p>98.648 species units of habitat for Thin-leaf Daisy-bush, <i>Olearia curticomma</i></p> <p>137.688 species units of habitat for Forest Red-box, <i>Eucalyptus polyanthemos subsp. longior</i></p> <p>142.129 species units of habitat for Silky Kidney-weed, <i>Dichondra sp. 1</i></p> <p>40.829 species units of habitat for Heath Spider-orchid, <i>Caladenia peisleyi</i></p>
Large trees*	805 trees
<b>* The total number of large trees that the offset must protect</b>	852 large trees to be protected in either the general, species or combination across all habitat units protected

NB: values within tables in this document may not add to the totals shown above due to rounding

Appendix 1 includes information about the native vegetation to be removed

Appendix 2 includes information about the rare or threatened species mapped at the site.

Appendix 3 includes maps showing native vegetation to be removed and extracts of relevant species habitat importance maps

<sup>1</sup> The general offset amount required is the sum of all general habitat units in Appendix 1.

<sup>2</sup> Minimum strategic biodiversity score is 80 per cent of the weighted average score across habitat zones where a general offset is required

<sup>3</sup> The species offset amount(s) required is the sum of all species habitat units in Appendix 1.

## Next steps

Any proposal to remove native vegetation must meet the application requirements of the Detailed Assessment Pathway and it will be assessed under the Detailed Assessment Pathway.

If you wish to remove the mapped native vegetation you are required to apply for a permit from your local council. Council will refer your application to DELWP for assessment, as required. **This report is not a referral assessment by DELWP.**

This *Native vegetation removal report* must be submitted with your application for a permit to remove, destroy or lop native vegetation.

Refer to the *Guidelines for the removal, destruction or lopping of native vegetation* (the Guidelines) for a full list of application requirements. This report provides information that meets the following application requirements:

- The assessment pathway and reason for the assessment pathway
- A description of the native vegetation to be removed (partly met)
- Maps showing the native vegetation and property (partly met)
- Information about the impacts on rare or threatened species.
- The offset requirements determined in accordance with section 5 of the Guidelines that apply if approval is granted to remove native vegetation.

Additional application requirements must be met including:

- Topographical and land information
- Recent dated photographs
- Details of past native vegetation removal
- An avoid and minimise statement
- A copy of any Property Vegetation Plan that applies
- A defensible space statement as applicable
- A statement about the Native Vegetation Precinct Plan as applicable
- A site assessment report including a habitat hectare assessment of any patches of native vegetation and details of trees
- An offset statement that explains that an offset has been identified and how it will be secured.

© The State of Victoria Department of Environment, Land, Water and Planning Melbourne 2021

This work is licensed under a Creative Commons Attribution 4.0 International licence. You are free to re-use the work under that licence, on the condition that you credit the State of Victoria as author. The licence does not apply to any images, photographs or branding, including the Victorian Coat of Arms, the Victorian Government logo and the Department of Environment, Land, Water and Planning logo. To view a copy of this licence, visit <http://creativecommons.org/licenses/by/3.0/au/deed/en>

Authorised by the Victorian Government, 8 Nicholson Street, East Melbourne.

For more information contact the DELWP Customer Service Centre 136 186

[www.delwp.vic.gov.au](http://www.delwp.vic.gov.au)

### Disclaimer

This publication may be of assistance to you but the State of Victoria and its employees do not guarantee that the publication is without flaw of any kind or is wholly appropriate for your particular purposes and therefore disclaims all liability for any error, loss or other consequence which may arise from you relying on any information in this publication.

Obtaining this publication does not guarantee that an application will meet the requirements of Clauses 52.16 or 52.17 of the Victoria Planning Provisions and Victorian planning schemes or that a permit to remove native vegetation will be granted.

Notwithstanding anything else contained in this publication, you must ensure that you comply with all relevant laws, legislation, awards or orders and that you obtain and comply with all permits, approvals and the like that affect, are applicable or are necessary to undertake any action to remove, lop or destroy or otherwise deal with any native vegetation or that apply to matters within the scope of Clauses 52.16 or 52.17 of the Victoria Planning Provisions and Victorian planning schemes.

## Appendix 1: Description of native vegetation to be removed

The species-general offset test was applied to your proposal. This test determines if the proposed removal of native vegetation has a proportional impact on any rare or threatened species habitats above the species offset threshold. The threshold is set at 0.005 per cent of the mapped habitat value for a species. When the proportional impact is above the species offset threshold a species offset is required. This test is done for all species mapped at the site. Multiple species offsets will be required if the species offset threshold is exceeded for multiple species.

Where a zone requires species offset(s), the species habitat units for each species in that zone is calculated by the following equation in accordance with the Guidelines:

$$\text{Species habitat units} = \text{extent} \times \text{condition} \times \text{species landscape factor} \times 2, \text{ where the species landscape factor} = 0.5 + (\text{habitat importance score}/2)$$

The species offset amount(s) required is the sum of all species habitat units per zone

Where a zone does not require a species offset, the general habitat units in that zone is calculated by the following equation in accordance with the Guidelines:

$$\text{General habitat units} = \text{extent} \times \text{condition} \times \text{general landscape factor} \times 1.5, \text{ where the general landscape factor} = 0.5 + (\text{strategic biodiversity value score}/2)$$

The general offset amount required is the sum of all general habitat units per zone.

### Native vegetation to be removed

Information provided by or on behalf of the applicant in a GIS file							Information calculated by EnSym					
Zone	Type	BioEVC	BioEVC conservation status	Large tree(s)	Partial removal	Condition score	Polygon Extent	Extent without overlap	SBV score	HI score	Habitat units	Offset type
1-A	Patch	xx_0000	x	x	xx	x	x	x	x	x	0.000	xxxxxxxx
										x	0.000	0000 00 xxxxxx
												0000 00 xxxxxx
												0000 00 xxxxxx
											0.000	0000 00 xxxxxx
										x	0.000	0000 00 xxxxxx

Refer to accompanying Excel spreadsheet, which must be included with this report in any application – 'Native Veg to be removed' tab

## Appendix 2: Information about impacts to rare or threatened species' habitats on site

This table lists all rare or threatened species' habitats mapped at the site.

Species common name	Species scientific name	Species number	Conservation status	Group	Habitat impacted	% habitat value affected
xxxxxx	xxxxxx	000000	xxxxxx	xxxxxx	xxxxxx	0.0000
xxxxxx	xxxxxx	Refer to accompanying Excel spreadsheet, which must be included with this report in any application – 'Impacts on VROTS habitat' tab				0.0000
xxxxxx	xxxxxx					0.0000
xxxxxx	xxxxxx					0.0000
xxxxxx	xxxxxx	000000	xxxxxx	xxxxxx	xxxxxx	0.0000

### Habitat group

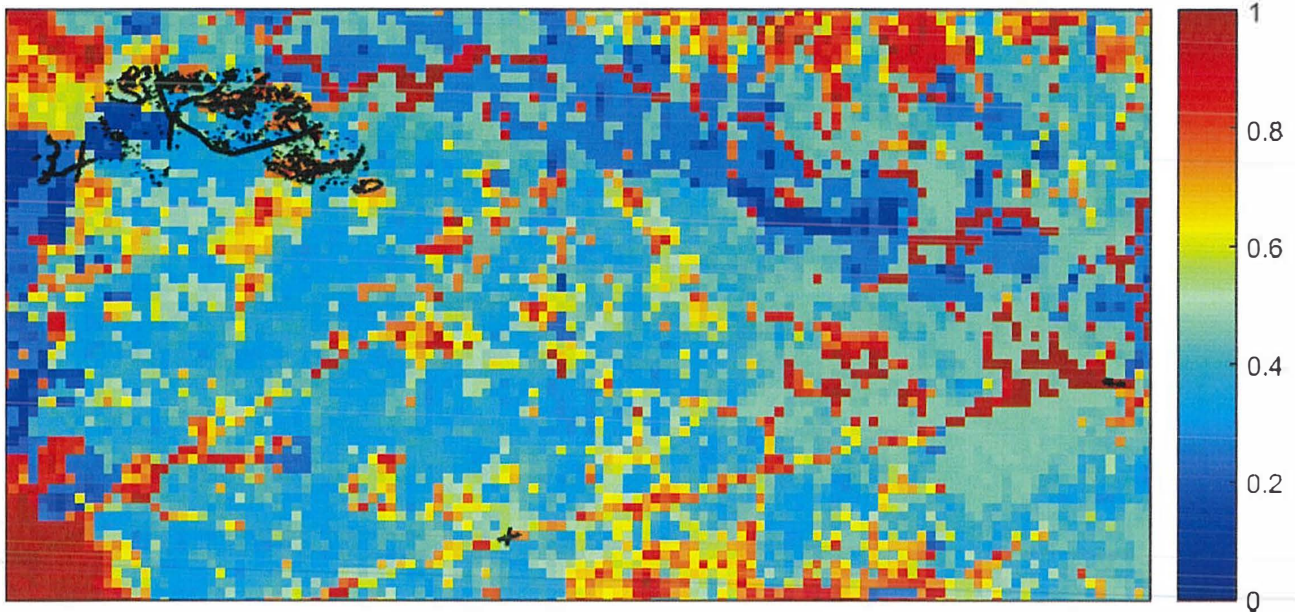
- Highly localised habitat means there is 2000 hectares or less mapped habitat for the species
- Dispersed habitat means there is more than 2000 hectares of mapped habitat for the species

### Habitat impacted

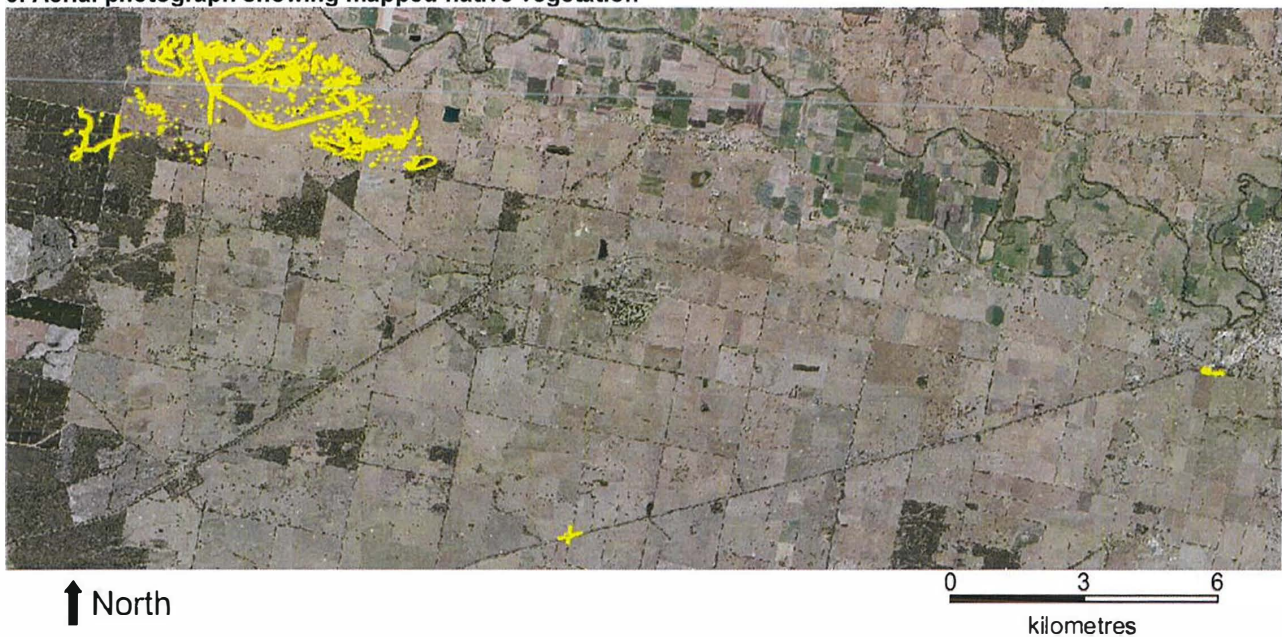
- Habitat importance maps are the maps defined in the Guidelines that include all the mapped habitat for a rare or threatened species
- Top ranking maps are the maps defined in the Guidelines that depict the important areas of a dispersed species habitat, developed from the highest habitat importance scores in dispersed species habitat maps and selected VBA records
- Selected VBA record is an area in Victoria that represents a large population, roosting or breeding site etc.

# Appendix 3 – Images of mapped native vegetation

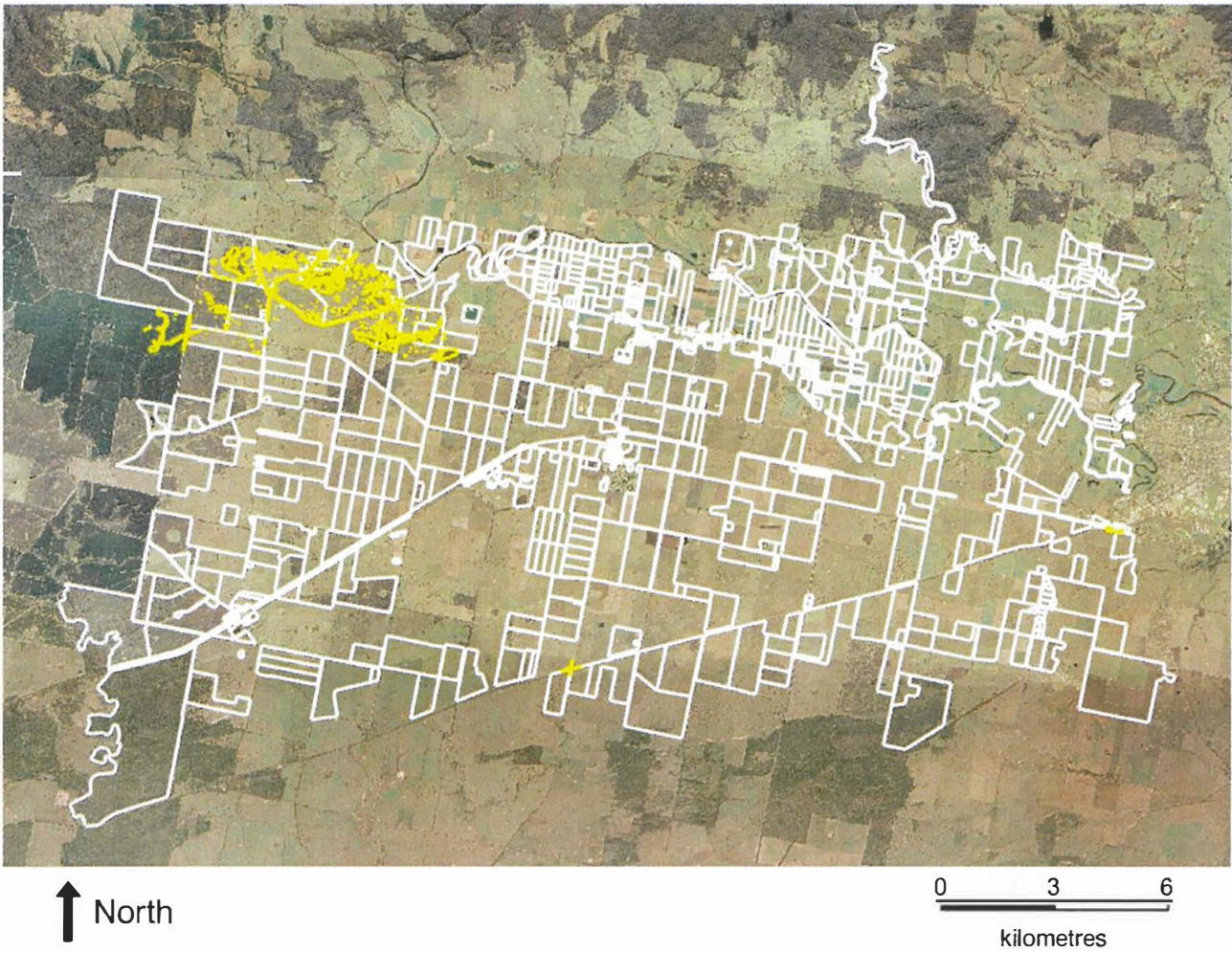
## 2. Strategic biodiversity values map



## 3. Aerial photograph showing mapped native vegetation



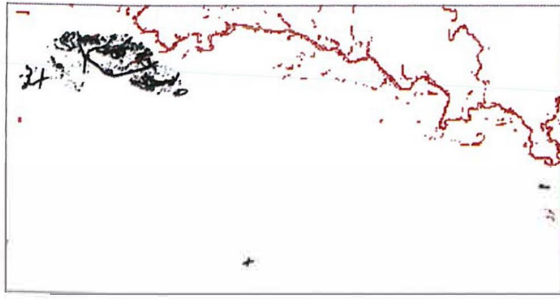
#### 4. Map of the property in context



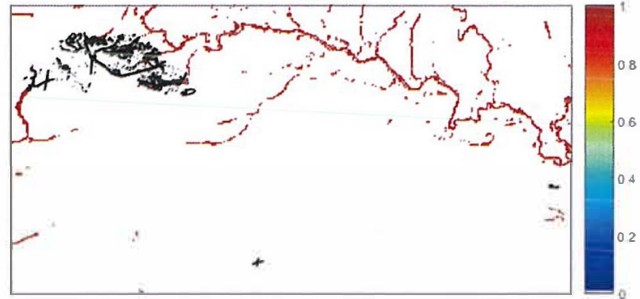
Yellow boundaries denote areas of proposed native vegetation removal.

#### 4. Habitat importance maps

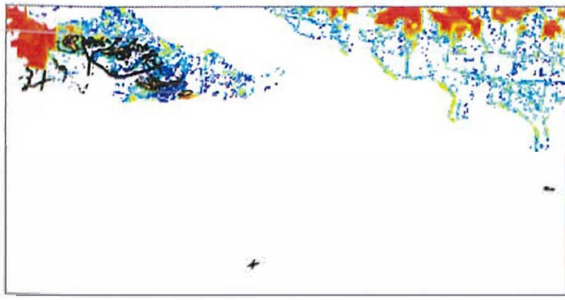
Australian Grayling  
*Prototroctes maraena*  
4686



Flinders Pygmy Perch  
*Nannoperca sp. 1*  
903041



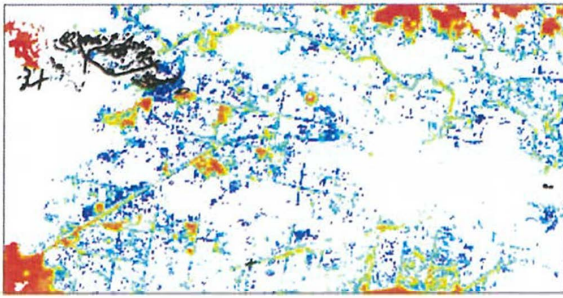
Sticky Wattle  
*Acacia howittii*  
500044



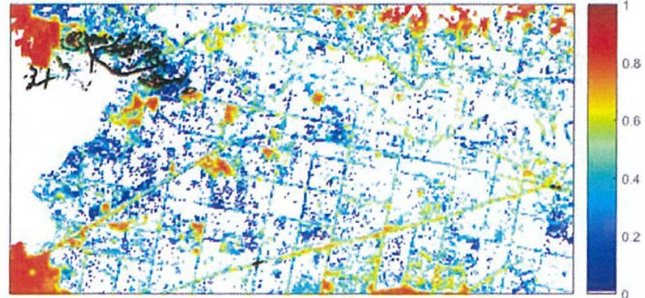
Yellow-wood  
*Acronychia oblongifolia*  
500116



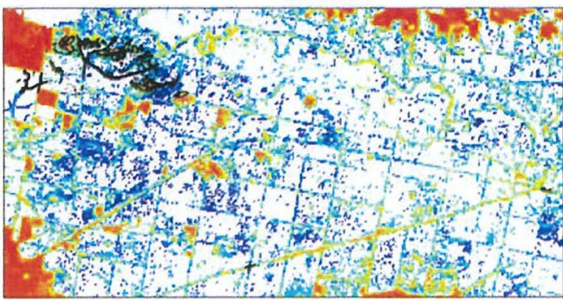
Thick-lip Spider-orchid  
*Caladenia tessellata*  
500547



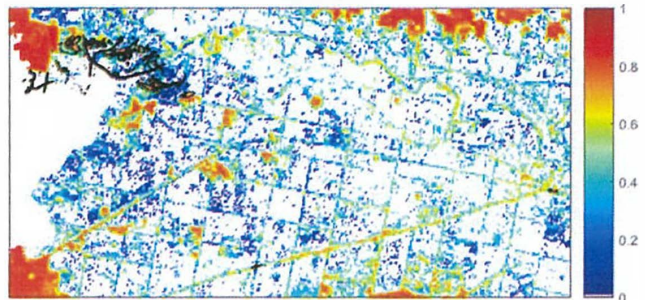
Purple Diuris  
*Diuris punctata*  
501084



Bushy Hedgehog-grass  
*Echinopogon caespitosus* var. *caespitosus*  
501120

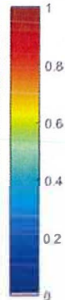
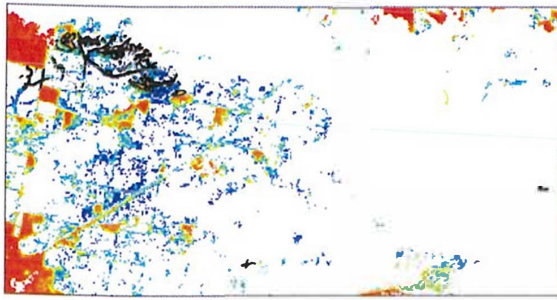


Rough-grain Love-grass  
*Eragrostis trachycarpa*  
501197

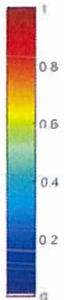
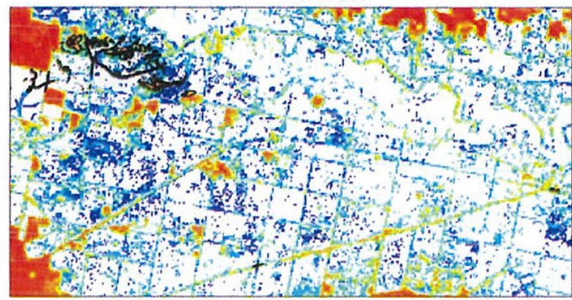




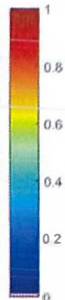
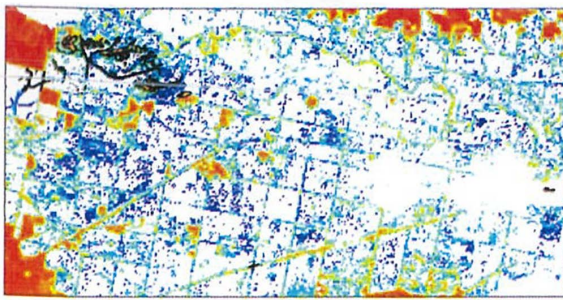
Slender Violet-bush  
*Hybanthus monopetalus*  
501711



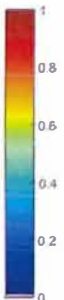
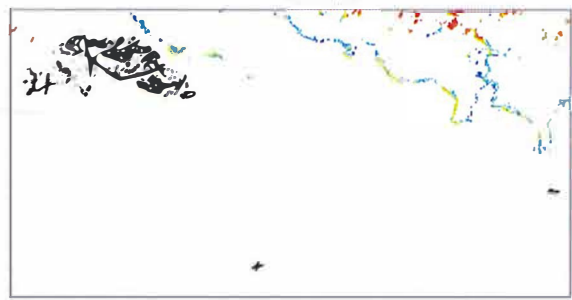
Slender Wire-lily  
*Laxmannia gracilis*  
501889



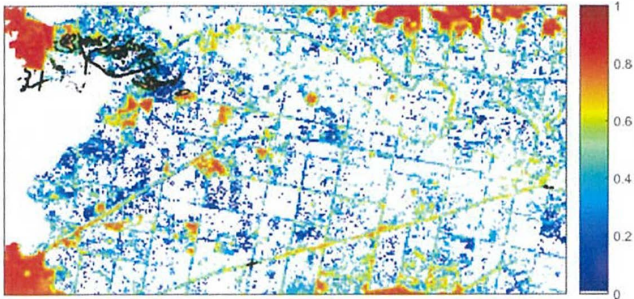
Golden Pomaderris  
*Pomaderris aurea*  
502651



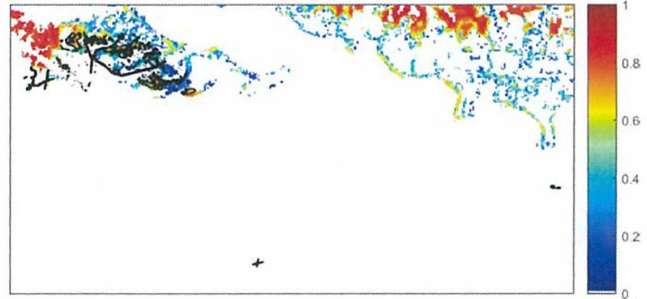
Star Cucumber  
*Sicyos australis*  
503139



One-flower Early Nancy  
*Wurmbea uniflora*  
503583



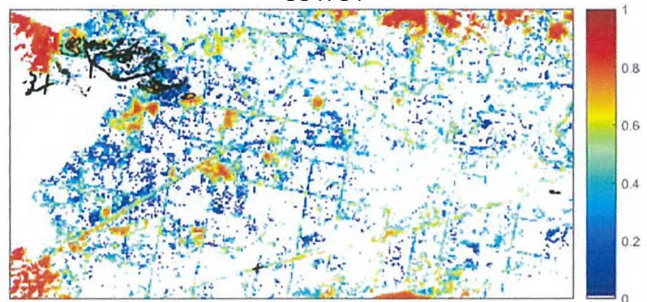
Limestone Blue Wattle  
*Acacia caerulescens*  
503633



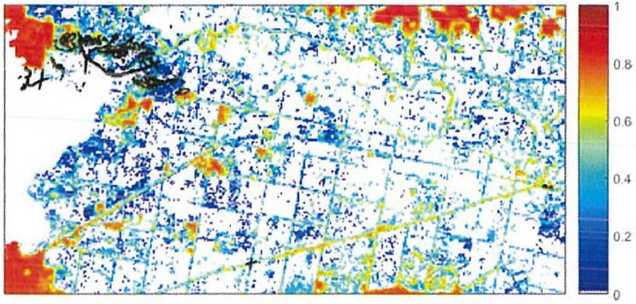
Thin-leaf Daisy-bush  
*Olearia curticoma*  
503904



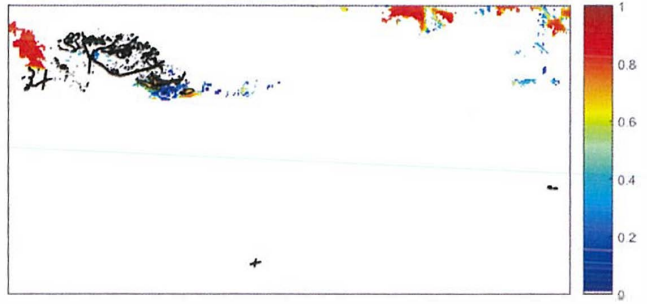
Forest Red-box  
*Eucalyptus polyanthemus* subsp. *longior*  
504754



Silky Kidney-weed  
*Dichondra sp. 1*  
505786



Heath Spider-orchid  
*Caladenia peisleyi*  
505890



## Attachment 3

**From:** Dr Monique Elsley <[REDACTED]>  
**Sent:** Thursday, 6 May 2021 4:29 PM  
**To:** EnSym NVR tool support (DELWP)  
**Cc:** Aaron Organ; Jared McGuiness  
**Subject:** RE: OFFICIAL: RE: Shapefiles for revised staged removal reports  
**Attachments:** EHP7308 shapefile 06-05-2021 Scenario 1.zip; EHP7308 shapefile 06-05-2021 Scenario 2.zip

Hi Chad,

Thanks for checking so quickly and apologies for the patch intersection and multipart polygon (it's been a long day but no excuse).

Regarding the third point, some patches with the same EVC/patch ID/condition score are split because of the staging boundaries. The vast majority of this was previously prepared and reports have been prepared with this same kind of split, and there are only a few additional patches that have been added.

Are you please now able to prepare the reports as previously done?

Thanks,

Monique

[Dr Monique Elsley](#) | GIS Coordinator

**Ecology and Heritage Partners**

This email, including any attachments, is intended for the addressee named. It is confidential and may be privileged. If you are not the intended recipient you must not copy, use, disclose, distribute or rely on the

---

**From:** EnSym NVR tool support (DELWP) <[REDACTED]>  
**Sent:** Thursday, 6 May 2021 4:13 PM  
**To:** Dr Monique Elsley <[REDACTED]>  
**Cc:** Aaron Organ <[REDACTED]>; Jared McGuiness <[REDACTED]>  
**Subject:** OFFICIAL: RE: Shapefiles for revised staged removal reports

Hello,

Unfortunately the data needs to be amended before we can process.

I haven't checked the Scenario 2 dataset; however the Scenario 1 dataset contains:

- A patch intersection (see attached)
- A multi-part polygon
- Split polygons that need to be merged in accordance with the advice outlined in Section 3.10.1 of the Assessors Handbook and Pg3 of Native Vegetation Newsletter #1 ([https://www.environment.vic.gov.au/\\_data/assets/pdf\\_file/0028/514594/1\\_NVR-newsletter-March-2018\\_final.pdf](https://www.environment.vic.gov.au/_data/assets/pdf_file/0028/514594/1_NVR-newsletter-March-2018_final.pdf)). Contiguous patches of the same EVC should only be split if the site condition score varies by 15 or more points, or if the extent of the patch is >1ha.

Regards,

Chad Browning

**EnSym NVR Tool Support | Native Vegetation Regulation, Biodiversity Division**  
 Environment and Climate Change | Department of Environment, Land, Water and Planning

OFFICIAL

**From:** Dr Monique Elsley [REDACTED]  
**Sent:** Thursday, 6 May 2021 3:30 PM  
**To:** EnSym NVR tool support (DELWP) [REDACTED]  
**Cc:** Aaron Organ [REDACTED] Jared McGuiness [REDACTED]  
**Subject:** Shapefiles for revised staged removal reports

**EXTERNAL SENDER: Links and attachments may be unsafe.**

Hi EnSym NVR Support,

Please find 2 shapefiles attached for 2 different scenarios for a staged development. The stage or year is identified in the HH\_SI field (years 1, 5, 8, 12 and 15). Can you please provide a report for each scenario breaking up the offset requirements per stage/year?

Can we please receive the reports tomorrow as they are required for an expert witness statement? Your assistance with this is greatly appreciated!

Thanks for your help,

Kind regards,

Monique

[Dr Monique Elsley](#) | GIS Coordinator

**Ecology and Heritage Partners**

Melbourne | Adelaide | Brisbane | Canberra | Geelong | Sydney



 Ecology and Heritage Partners acknowledge the Traditional Owners of the country we live and work on, and we pay our respect to Elders past and present.

This email, including any attachments, is intended for the addressee named. It is confidential and may be privileged. If you are not the intended recipient you must not copy, use, disclose, distribute or rely on the information contained in it. If you have received this email in error, please notify the sender immediately and then delete this email from your computer.

**From:** EnSym NVR tool support (DELWP) [REDACTED]  
**Sent:** Monday, 10 May 2021 10:49 AM  
**To:** Dr Monique Elsley  
**Cc:** Aaron Organ; Jared McGuiness  
**Subject:** RE: OFFICIAL: RE: Shapefiles for revised staged removal reports  
**Attachments:** NVR\_Report\_EHP7308\_Glenaladale\_S1\_CP\_20210510.pdf; EHP7308\_Glenaladale\_S1\_CP\_data\_20210510.xlsx; NVR\_Report\_EHP7308\_Glenaladale\_S2\_CP\_20210510.pdf; EHP7308\_Glenaladale\_S2\_CP\_data\_20210510.xlsx

Hi Monique,

Please find your report attached, as requested. Stages can be split in the excel file.

Due to the large number of zones and specific offsets in this report, the full biodiversity impact details that would normally be in the PDF have instead been included in the attached Excel file. These two files should be kept together and submitted together with any permit application.


Please note that this Excel file is also embedded in the PDF itself as an attachment.

Kind regards,

Sahar Kirmani

EnSym NVR Tool Support | Native Vegetation Regulation, Biodiversity Division  
 Environment and Climate Change | Department of Environment, Land, Water and Planning



 I acknowledge the traditional Aboriginal owners of country throughout Victoria and pay my respect to them, their culture and their Elders past and present

OFFICIAL

**From:** Dr Monique Elsley [REDACTED]  
**Sent:** Thursday, 6 May 2021 4:29 PM  
**To:** EnSym NVR tool support (DELWP) [REDACTED]  
**Cc:** Aaron Organ [REDACTED] Jared McGuiness [REDACTED]  
**Subject:** RE: OFFICIAL: RE: Shapefiles for revised staged removal reports

**EXTERNAL SENDER: Links and attachments may be unsafe.**

Hi Chad,

Thanks for checking so quickly and apologies for the patch intersection and multipart polygon (it's been a long day but no excuse).

Regarding the third point, some patches with the same EVC/patch ID/condition score are split because of the staging boundaries. The vast majority of this was previously prepared and reports have been prepared with this same kind of split, and there are only a few additional patches that have been added.

Are you please now able to prepare the reports as previously done?

Thanks,

Monique

[Dr Monique Elsley](#) | GIS Coordinator

**Ecology and Heritage Partners**

This email, including any attachments, is intended for the addressee named. It is confidential and may be privileged. If you are not the intended recipient you must not copy, use, disclose, distribute or rely on the

---

**From:** EnSym NVR tool support (DELWP) [REDACTED]  
**Sent:** Thursday, 6 May 2021 4:13 PM  
**To:** Dr Monique Elsley [REDACTED]  
**Cc:** Aaron Organ [REDACTED]; Jared McGuiness [REDACTED]  
**Subject:** OFFICIAL: RE: Shapefiles for revised staged removal reports

Hello,

Unfortunately the data needs to be amended before we can process.

I haven't checked the Scenario 2 dataset; however the Scenario 1 dataset contains:

- A patch intersection (see attached)
- A multi-part polygon
- Split polygons that need to be merged in accordance with the advice outlined in Section 3.10.1 of the Assessors Handbook and Pg3 of Native Vegetation Newsletter #1 ([https://www.environment.vic.gov.au/data/assets/pdf\\_file/0028/514594/1\\_NVR-newsletter-March-2018\\_final.pdf](https://www.environment.vic.gov.au/data/assets/pdf_file/0028/514594/1_NVR-newsletter-March-2018_final.pdf)). Contiguous patches of the same EVC should only be split if the site condition score varies by 15 or more points, or if the extent of the patch is >1ha.

Regards,

Chad Browning

**EnSym NVR Tool Support | Native Vegetation Regulation, Biodiversity Division**  
 Environment and Climate Change | Department of Environment, Land, Water and Planning

OFFICIAL

---

**From:** Dr Monique Elsley [REDACTED]  
**Sent:** Thursday, 6 May 2021 3:30 PM  
**To:** EnSym NVR tool support (DELWP) [REDACTED]  
**Cc:** Aaron Organ [REDACTED]; Jared McGuiness [REDACTED]  
**Subject:** Shapefiles for revised staged removal reports



**EXTERNAL SENDER: Links and attachments may be unsafe.**

Hi EnSym NVR Support,

Please find 2 shapefiles attached for 2 different scenarios for a staged development. The stage or year is identified in the HH\_SI field (years 1, 5, 8, 12 and 15). Can you please provide a report for each scenario breaking up the offset requirements per stage/year?

Can we please receive the reports tomorrow as they are required for an expert witness statement? Your assistance with this is greatly appreciated!

Thanks for your help,

Kind regards,

Monique

[Dr Monique Elsley](#) | GIS Coordinator

**Ecology and Heritage Partners**



Melbourne | Adelaide | Brisbane | Canberra | Geelong | Sydney



 Ecology and Heritage Partners acknowledge the Traditional Owners of the country we live and work on, and we pay our respect to Elders past and present.

This email, including any attachments, is intended for the addressee named. It is confidential and may be privileged. If you are not the intended recipient you must not copy, use, disclose, distribute or rely on the information contained in it. If you have received this email in error, please notify the sender immediately and then delete this email from your computer.