

## Submission by Kalbar Operations Pty Ltd

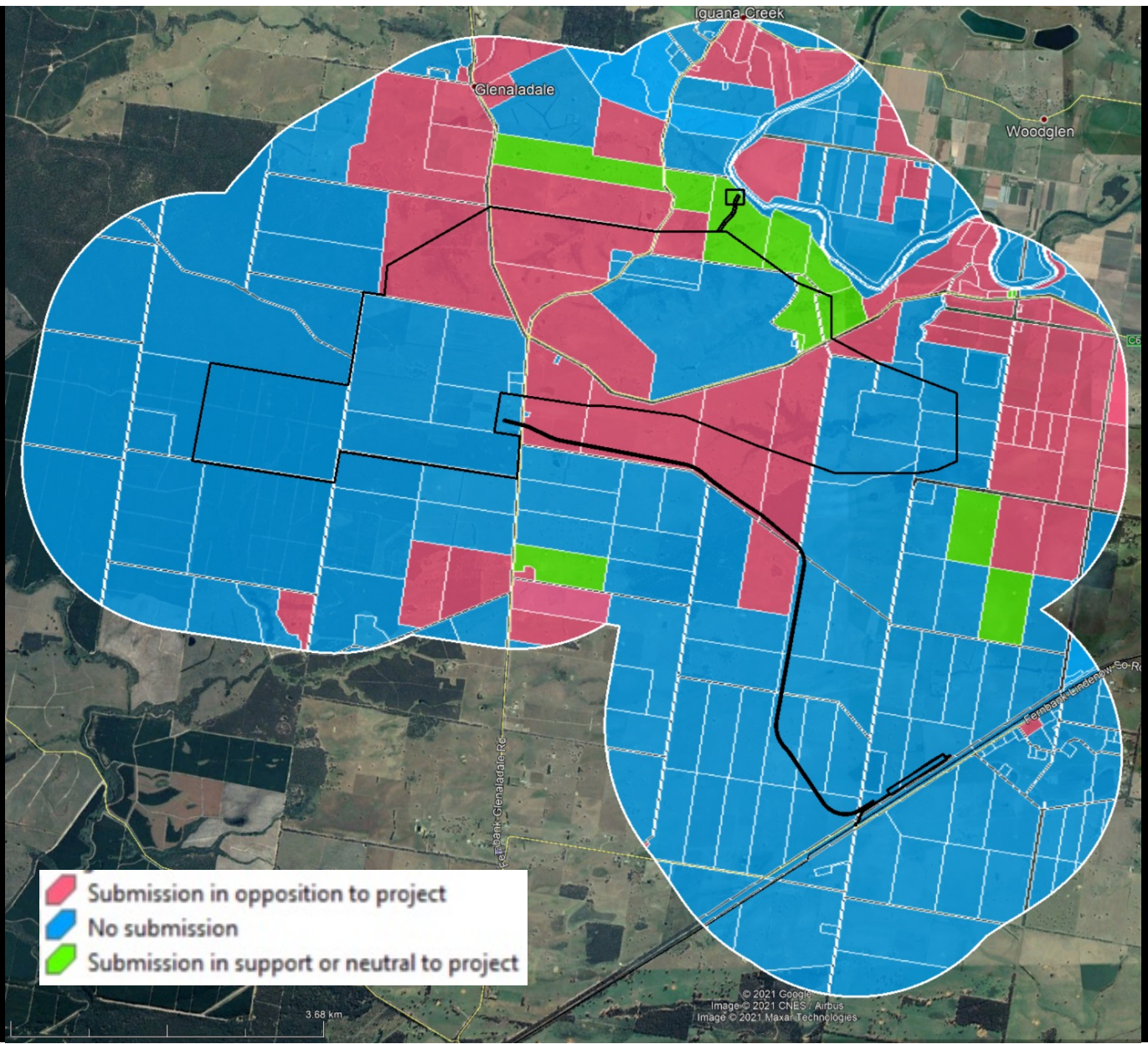
### Maps of submitters to EES in, and within two kilometres of, the Kalbar Project Area and the Incorporated Document Area




Kalbar has analysed the submissions to the EES by reference to the location of the land owned or occupied by the submitter and by reference to the location of the dwelling owned or occupied by the submitter. This has been done by reference to the information in the written submission and applying a judgment as the substance of the submission.

Figure 1 is a map of the land in, and within two kilometres of, the Kalbar Project Area and the Incorporated Document Area, showing (by colour coding) the **land** in respect of which a land owner or occupier made an EES submissions in opposition to the Kalbar project, or made no submission, or made a submission which was in support of, or neutral, to the Kalbar project.

Figure 2 is a map of the land in, and within two kilometres of, the Kalbar Project Area and the Incorporated Document Area, showing (by colour coding) the **dwelling**s in respect of which a land owner or occupier made an EES submissions in opposition to the Kalbar project, or made no submission, or made a submission which was in support of, or neutral, to the Kalbar project.

Figure 3 is a map of the land in, and within two kilometres of, the Kalbar Project Area and the Incorporated Document Area, showing (by colour coding) the **land** and the **dwelling**s in respect of which a land owner or occupier made an EES submissions in opposition to the Kalbar project, or made no submission, or made a submission which was in support of, or neutral, to the Kalbar project.



-  Submission in opposition to project
-  No submission
-  Submission in support or neutral to project



